

Advisory Council Highlights

June 2020

Volume 3, Issue 3

In This Issue

- June 2020 Meeting
- CCEE Agency Updates
- Budget Updates
- Legislative Updates

Web Links

[CCEE Advisory Council Webpage](#)

[CCEE Website](#)

[CCEE Distance Learning Resources](#)

Social Media

    @CCEECA

CCEE Council Members (Superintendents)

Rob Adams, Redding SD
Ted Alejandro, San Bernardino COE
Christi Barrett, Hemet USD
Todd Cutler, Winters JUSD
Debra Duardo, Los Angeles COE
Francisco Escobedo, Chula Vista ESD
Lisette Estrella-Henderson, Solano COE
Todd Finnell, Imperial COE
Jose Gonzalez, Planada ESD
Dave Gordon, Sacramento COE
Patty Gunderson, Lassen COE
Chris Hartley, Humboldt COE
Diann Kitamura, Santa Rosa City Schools
Scott Kuykendall, Stanislaus COE
Leslie Lockhart, Culver City USD
Krystal Lomanto, San Benito COE
Martha Martinez, Salinas EUSD
Susan Salcido, Santa Barbara COE
Christine Walker, Hueneme ESD
Jim Yovino, Fresno COE
Mary Jane Burke, Marin COE

CCEE Advisory Council Chairperson

Christine Lizardi Frazier, Ed.D.
chfrazier@kern.org

The CCEE Advisory Council Highlights is a newsletter that captures the highlights of council meeting discussions. This newsletter is intended to inform the field. Please share with your fellow superintendents or any interested parties.

June Meeting (6/3/2020)

Christine Lizardi Frazier, CCEE Advisory Council Chairperson, welcomed the Advisory Council members and provided a space for them to share thoughts and experiences around the death of George Floyd and the protests occurring across the nation. Tom Armelino, CCEE Executive Director, recounted a personal experience in which he witnessed the harassment and racial injustice of a black teaching colleague from his early days teaching in Bowling Green, VA, just outside of Richmond. Additional Advisory Council members shared personal stories to encourage conversations about race, equity, and healing. These stories were grounded in empathy and oriented toward equity, to acknowledge and witness the wrongs created by individual and systemic racism, and to determine reparations for people, communities, and institutions.

CCEE DISTANCE LEARNING SUPPORTS

Continuity of Learning Playbooks: CCEE Deputy Executive Director, Sujie Shin, presented the [Continuity of Learning Playbooks](#) and demonstrated how to access the tools and resources on the website. Developed in partnership with San Diego COE, Riverside COE, and Copernicus Coaching & Consulting, these Playbooks focus on teaching and learning to support school and district leadership teams plan for a safe return to school that addresses the diverse needs of California's students. The Playbooks present two pathways in thinking about the reopening of schools: distance learning (no in-person interaction) and hybrid learning (some in-person interaction). Providing a broader framework for LEA teams transitioning to distance or hybrid learning, both Playbooks begin with three high-level questions focused on setting goals, creating schedules, and communicating plans. With equity considerations in each section, further components include assessment,

CCEE Executive Director

Tom Armelino

CCEE Staff Presenters

Sujie Shin, Deputy Executive Director

CCEE Liaisons

Brooks Allen, Marin COE

Monique Ramos, California Strategies

2020-21 CCEE Advisory Council Meeting Schedule

September 18, 2020

December 11, 2020

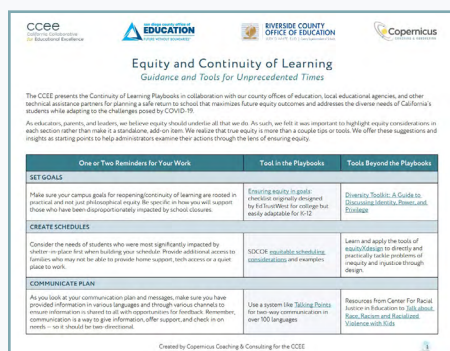
March 12, 2021

June 11, 2021

**** Please note that these meetings will be held virtually.**



>> Click [here](#) to access the Continuity of Learning Playbooks!



>> Click [here](#) to access the Equity Guidance document.

trauma-informed SEL, capacity building, English Learners, special education, and support programs. In the first week of its launch, the Playbooks have received over 4,00 page views and 1,200 unique visitors! CCEE also hosted a [webinar](#) on Friday, June 5th to provide an overview of how the Playbooks can support LEAs plan for equity-driven distance and hybrid learning. Register for the upcoming Playbook webinars!

- ➔ [Setting Goals, Creating Schedules, and Communicating Your Plan for Next Year](#) (Monday, June 15 from 10:00-11:00am)
- ➔ [Planning for Distance Learning with an Equity Lens](#) (Tuesday, June 16 from 1:00-2:00pm)
- ➔ [Planning for Hybrid Learning with an Equity Lens](#) (Tuesday, June 23 from 1:00-2:00pm)

Blended Learning: Pam Gildersleeve-Hernandez, Executive Director at CUE, shared how CUE is accelerating learning through the use of technology. Providing professional learning expertise through 22 regional affiliates, CUE's robust network of Lead Learners provide learning that supports the effective use of technology and protocols to engage students in effective instructional design. With LEAs shifting to emergency remote learning in response to the COVID-19 pandemic, Gildersleeve-Hernandez stated that this crisis is an opportunity to redistribute our investments in curriculum and redesign how educators infuse technology into teaching to support student learning, whether implementing an on-site, remote, or hybrid model of learning. CCEE has been partnering with CUE to offer over 55 online virtual sessions to support all educators (teachers, administrators, and paraprofessionals) in blended and online instruction using the Google platform.

BUDGET UPDATES

Mike Fine, Chief Executive Officer at FCMAT, started his presentation by providing a comparison of public school revenue sources between the United States, on average, and California to illustrate why our state's economy takes a dive when a crisis like COVID-19 occurs. The United States, on average, receives 47% of its public school revenue from the state sources, relative to local and federal sources. In comparison, California receives a greater share of its resources from state sources at 58%, which is made up of personal income tax, sales & use tax, and corporation tax. Each of these taxes are forecasted to experience a 25-30% decline between our current year and next year. Comparing the forecasted income loss to that of the Great Recession, the Department of Finance released data points revealing the greater impact this economic downturn will have on California's public school revenue sources.

Fine outlined the financial and political considerations of the state in approaching the overall size of the state revenue reductions and its resulting impact on Prop 98 of \$19B. These include miscellaneous adjustments, postponed initiatives, the size of interyear apportionment deferrals, the size of non-LCFF Prop 98 program cuts, relief from non-Prop 98 funding sources, and LCFF rate reductions. Fine provided a side-by-side comparison of the different approaches from the Administration, Assembly, and Senate, with



>> Click [here](#) to access the presentation from FCMAT.

regards to the COLA, LCFF proration, special education, and payment deferrals. He noted that the Assembly will be in between the Administration and the Senate, but will tend to side on the Senate's philosophical approach to the budget. He then summarized the fiscal realities for the next budget year, noting the importance of making decisions through the added lens of the Multiyear Financial Projections (MYFP) and its impact on a district's overall financial health for the outyears. With the rapid decline in state resources and federal assistance, as well as the continued expenditures in distance learning and costs associated with physical distancing, Fine advised the Advisory Council members to leave enough flexibility in their LCAPs, in thinking about their priorities and what the stakeholder input process will look like.

Fine also spoke on the declining student enrollment trends in California's K-12 public schools and the impact COVID-19 could have on traditional public school enrollment. On average, California saw a 14.8% growth in student enrollment from 2000-01 through 2009-10, and an 8.4% growth from 2010-11 through 2018-19. Average growth in statewide enrollment is projected to fall to 7.8% from 2020-21 through 2027-28, and 4.9% as California approaches 2050. Districts will most likely face the fiscal challenges of shedding expenses relative to the loss in revenue, as state funding is tied to the number of students served. COVID-19 could further impact declining enrollment projections with families choosing distance learning options for the next academic year. District leadership should take this into consideration when planning for next year.

LEGISLATIVE UPDATES

Monique Ramos, Partner at California Strategies, shared that a Conference Committee will most likely not convene this year. It is believed that negotiation has already started with the Administration and the Legislature. Closely linked in their larger structuring of the budget, the Assembly and Senate do not want trigger cuts imposed at the level the Legislature has proposed and are relying on federal relief to offset the baseline General Fund costs. The Legislature will start wrapping up the budget by June 9th or 10th to submit the budget bill and trailer bills to the Legislative Counsel by June 12th. This will allow the Legislature to vote on and pass the budget by the constitutional deadline of June 15th. As for legislation, very few of the bills that were introduced at the beginning of the year were sent to the Suspense File Hearing held by the Assembly Appropriations Committee on Wednesday, June 3rd. Click [here](#) for the public results. The Senate will not have its Appropriations Committee Hearing until Tuesday, June 9th.

At the end of the meeting, the CCEE Advisory Council celebrated and recognized Christine Lizardi Frazier as the first member emeritus. Thank you for your dedication and commitment to the Advisory Council!