

*Working to strengthen the System of Support for every student.*

## The CCEE Connection

JULY 2019 UPDATE

### The CCEE'S MONTHLY PODCAST

**Episode 12: Differentiated Assistance**  
**"Returning to Gold Country"**



**CA SCHOOL  
FIELD TRIP  
PODCAST**

In [Episode 12: Returning to Gold Country](#), the topic is **Differentiated Assistance** which is a term that describes what happens when a district is identified for needing extra support under CA's new approach to school improvement.

We hear from education leaders from the [Mother Lode Union School District](#) and the [El Dorado County Office of Education](#) as they reflect on their two-year experience in DA, share progress made, and adaptations in strategies.



The Mother Lode/ El Dorado County experience was first featured on the *CA School Field Trip* in [Episode 1: Prospecting in Gold Country](#) (2018).

In [Episode 12](#), they flashback to portions of that story as they discuss lessons learned and the work ahead.

*\*\*This podcast episode is part of the [CCEE's Differentiated Assistance Toolkit](#). See [Podcast Bonus Materials](#) for more resources.*

### PODCAST BONUS MATERIAL



*Episode 12* of the *CA School Field Trip Podcast* is part of the [CCEE's Differentiated Assistance Toolkit!](#) The toolkit also includes:

[DA Podcast Notes](#) — This handy reference guide highlights timestamped sections of the podcast interview so you can listen along and more deeply understand key takeaways, advice and reflections, and the summary of lessons learned.

[DA Podcast Transcription](#) — A full English transcription of *Episode 12* to use as reference.

### DIRECT TECHNICAL ASSISTANCE

#### NEW! The CCEE's Direct Technical Assistance Online Request Form

The CCEE has a [new online request form](#) for LEAs interested in receiving **Direct Technical Assistance** from our agency.

Using an integrated, highly collaborative approach, we focus on key areas, and provide whatever form of assistance is called for – from analyzing and addressing existing challenges to helping identify and develop new opportunities. We're here to help.

>> **Click here:** [CCEE's Direct Technical Assistance Online Request Form](#) or visit [ccee-ca.org](#).



Subscribing to the CCEE's CA School Field Trip Podcast is easy!  
 Find us on Apple Podcasts, Google Podcasts and Stitcher.

## Thoughts from the CCEE Team & its Partners

### Special Education Resource Connectors

By *Michelle Magyar, Ph.D., CCEE Senior Manager, Continuous Improvement*

*Tamara Clay, Director, El Dorado County SELPA*

*Ginlese Quann, Director El Dorado County Charter SELPA*

Special education for both traditional and charter schools is at the forefront of California's leadership governing K-12 education as evidenced in the [State Budget Act of 2019](#).

This year, **243 out of 374 LEAs** identified for **Differentiated Assistance (DA)** are eligible based on the **students with disabilities student group performance** on state and local indicators.

Coming this fall, **charter schools** will receive their first notification of eligibility status for *Differentiated Assistance* with the release of the 2019 Dashboard.

The [CA Collaborative for Educational Excellence \(CCEE\)](#) stands ready to assist all Local Educational Agencies (LEAs), in addition to supporting LEAs eligible for *Differentiated Assistance*, by partnering with Lead Agencies (i.e., Geographic and Resource Leads, county offices of education, and the California Department of Education to coordinate, facilitate, and connect to points throughout the system of support (Figure 1).

For example, in order to maximize the support and commitment of resources to special education provided by California's leadership, as well as respond to the needs of LEAs, CCEE is highlighting a **suite of web modules** designed to provide a foundation for improving outcomes for students with disabilities.

The modules, which will contain downloadable presentation slides and handouts, will be available on the [CCEE website](#) beginning in **August 2019**.

These resources were developed by the [El Dorado County Office of Education \(EDCOE\) Charter Special Education Local Plan Area \(SELPA\)](#) to support charter schools and charter authorizers.

The series begins with an introductory video. Here's a summary of the corresponding modules:

- **Module 1-** Provides an overview of California's accountability system, specifically the [California School Dashboard](#) and participation of students with disabilities in California's assessment system.
- **Module 2-** Dives deeper into models and processes intended to help LEAs plan and implement instructional programs that improve academic performance and address identified gaps in learning for all students.
- **Module 3-** Addresses the first of the four phases of the improvement process, *Prepare*.
- **Module 4-** Continues the review of the improvement process by examining the *Launch, Reflect* and *Adjust* phases.

In addition, the CCEE is excited to soon highlight a **second set of modules** available this fall. Those modules are being developed by the System of Support's **SELPA System Improvement Lead (SIL)** to support SELPAs, county offices of education, and school districts.

An important aspect of CCEE's work is teaming up with educational partners, such as the [EDCOE Charter SELPA](#) and the SIL, to build capacity in LEAs to implement continuous improvement processes that impact student outcomes.

To learn more about special education resources, including the [State Performance Plan Indicator Guide](#) provided by the SIL, and the upcoming web module series, please visit the [CCEE Resources Collection](#).

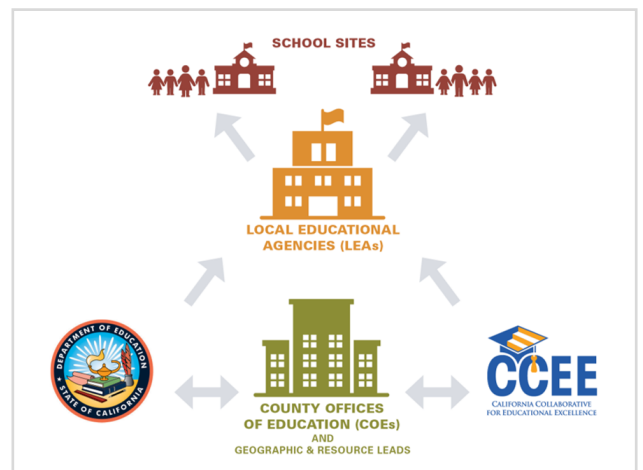


Figure 1 – The CCEE and Partners As Resource Connectors