

Working to strengthen the System of Support for every student.

The CCEE Connection

JUNE 2019 UPDATE

DIRECT TECHNICAL ASSISTANCE

Inglewood USD: Systemic Instructional Review Completed

The **Inglewood Unified School District** is one of four districts receiving *Direct Technical Assistance* from the CCEE under a special legislative statute which is triggered when an LEA receives an emergency apportionment (state loan) because it is fiscally insolvent.

As part of the CCEE's *Wraparound Support*, the CCEE recently completed a *Systemic Instructional Review (SIR)*.

The *SIR* is a Pre-K to 12 comprehensive instructional assessment of an LEA's strengths, weaknesses, opportunities, and threats to effective instructional systems.

CCEE continues to work collaboratively with IUSD and the **Los Angeles County Office of Education** to support the implementation of the action steps identified from the *SIR*.

PROFESSIONAL LEARNING

Coming Soon: CCEE's Differentiated Assistance Toolkit



Later this month, we offer the **CCEE Differentiated Assistance Toolkit** which includes podcast interviews with education leaders from the **Mother Lode Union School District** and the **El Dorado County Office of Education** in Northern California.

They revisit their 2018 CCEE podcast *Prospecting in Gold Country* to reflect on their first year of *Differentiated Assistance (DA)* and share progress made, lessons learned, adaptations in strategies, and the work ahead. Stay tuned!

MODELS OF CONTINUOUS IMPROVEMENT

Special Podcast Series Begins in June



EPISODE 11 (Part I): Chula Vista's Journey to Excellence

The CCEE teamed up with **WestEd**, a nonprofit, nonpartisan education research organization, to recognize certain public school districts in California as *Models of Continuous Improvement* under the state's new approach to education.

This month, we bring you the first installment of an ongoing podcast series focusing on one of the models: the **Chula Vista Elementary School District**.

CVESD – just seven miles from the U.S.-Mexico border – is one of the largest elementary school districts in the state and is “beating the odds” with its pioneering practices that are producing results for all students.

Find out how Chula Vista was identified as a *Model of Continuous Improvement* and hear touching stories from educators and students in this border city.



Subscribing to the CCEE's CA School Field Trip Podcast is easy! Find us on Apple Podcasts, Google Podcasts and Stitcher. Just type: CA School Field Trip

Thoughts from the CCEE Team

Wraparound Support at the Local Level

By *Karla Estrada, Ed.D., CCEE Director of Systems Improvement & Innovation*

Rocio Gonzalez-Frausto, CCEE Senior Manager, Instructional Systems & Innovation

An important part of our work at the CCEE is teaming with county offices of education and other expert resources to build the capacity of individual LEAs through **Direct Technical Assistance**.

Using an integrated, highly collaborative approach, we focus on key areas and provide whatever form of assistance is called for -- from analyzing and addressing existing challenges to helping identify and develop new opportunities.

Our approach to *Direct TA* has been largely influenced and shaped by the **CCEE's Pilot Partnership Initiative** which brings together 12 LEAs from across California for a multi-year school improvement journey.

Our "pilots" are made up of school district and charter school leadership teams consisting of teachers, principals, superintendents, and support staff leaders. Their county office partners also serve as critical members of the group.

A "CCEE Lead" is assigned to each team who provides coaching on identifying a problem of practice, implementing continuous improvement cycles, and creating accountability with a focus on impact and establishing a network of "critical friends."

In addition, the CCEE organizes **Pilot Partnership Summits** where teams come together for two days of deeper learning and team planning, leveraging the skills of other LEA teams and county office partners in the process.

Last month, the initiative celebrated a significant milestone in which the 12 teams formally presented their learnings and actions which included a laser-like focus on their problems of practice, innovative strategies to overcome challenges, and a pledge to work collaboratively in attaining goals that address or prevent the problem of practice over time.

The CCEE has learned as much -- if not more -- from our pilots as we strive to be resiliently focused on building continuous improvement cultures and practices across the state, collaborating across agencies (with LEAs, COEs, and the CDE) and within LEA teams, and supporting LEA teams of teachers, principals, superintendents and staff leaders by serving as a coach and strategic thought partner.

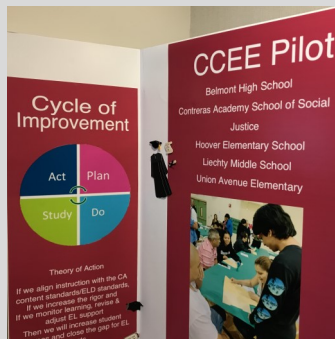
Moving forward, the **Pilot Partnership Initiative** will continue to inform CCEE's technical assistance efforts. Specifically, for LEAs who are now automatically referred to the CCEE for *Direct TA* under a new legislative statute that is triggered when an LEA receives an emergency apportionment (state loan) because it is fiscally insolvent.

Currently the CCEE is working with four districts in California under this special circumstance: Inglewood USD, Vallejo City USD, South Monterey County Joint Union HSD, and Oakland USD.

As the work continues to evolve and *Direct TA* from CCEE is accessed, we are committed to reflecting on the rich learnings and meaningful feedback from our **Pilot Partnership Initiative** to provide targeted support at the local level.

If you would like to inquire about CCEE *Direct TA*, please visit our website ccee-ca.org and submit an **online request**.

MAY 2019 CCEE Pilot Partnership Summit



Last month, the CCEE Pilot Partnership Initiative celebrated a significant milestone in which LEA teams presented their learnings and actions at our Pilot Partnership Summit in San Diego, Ca.