

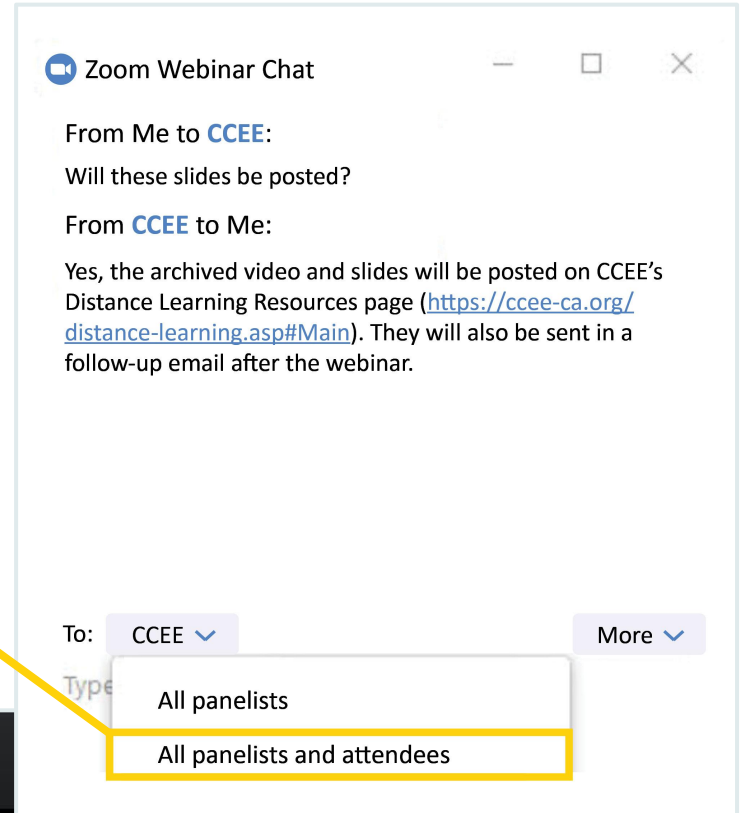
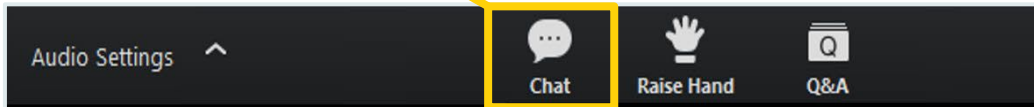
# Introduction to the Health & Safety Guidebook: Tools & Resources to Support a Safe Return to Schools

September 23, 2020

# USING ZOOM CHAT

Click on the drop down button and click ALL PANELISTS AND ATTENDEES.

In your controls at the bottom window, click CHAT.



# PRESENTERS

---



Sujie Shin

Deputy Executive Director  
CCEE



Dr. Linda Darling-Hammond

State Board President  
State Board of Education



Dr. Nicole Assisi

Partner  
Copernicus



Dr. Daniel Assisi

Partner  
Copernicus

# WHY A "GUIDEBOOK"?

- Aligning with Current Vision and Mission
- Keeping Students and Staff Safe
- Designing for Equity
- Addressing the Social-emotional and Academic Needs of Students

# Continuity of Learning

Resources to Support California Schools Reduce Risk and Accelerate Learning



[k12playbook.ccee-ca.org](https://k12playbook.ccee-ca.org)

## Health & Safety Guidebook

NEW

Minimizing risk.

READ

## Distance Learning Playbook

No in-person interaction.

READ

## Hybrid Learning Playbook

Some in-person interaction.

READ

# DOMAINS OF THE GUIDEBOOK

## Community Health Context

When can students and staff return to campus?

- ✔ Establish Key Liaisons
- ✔ Criteria for Reopening
- ✔ Elementary School Waiver
- ✔ Early Return for Small Groups
- ✔ Special Circumstances
- ✔ Criteria for Considering Closure
- ✔ Child Care on Campus
- ✔ Site Specific Protection Plan
- ✔ Transparent Communications

READ

## Facilities & School Operations

How do we prepare for the return to campus?

- ✔ Use of Space
- ✔ Nutrition / Meal Services
- ✔ Cleaning and Disinfecting
- ✔ Ventilation
- ✔ Transportation
- ✔ Reporting an Outbreak
- ✔ Procurement of Supplies
- ✔ Technology Considerations

READ

## Safe School Environments

What happens when we are back on campus?

- ✔ Protective Equipment
- ✔ Enhanced Hygiene Practices
- ✔ Preparing Staff
- ✔ Entry & Exit From Schools
- ✔ Daily Symptoms Screening
- ✔ Testing for COVID-19 & Reporting
- ✔ Non Allowance Activities
- ✔ Considerations for Families

READ

## Cohorts for Safe Learning

How can we structure student groups to maximize safety

- ✔ Cohorting
- ✔ Cohort Mixing
- ✔ Small Group Targeted Support
- ✔ Picking a Scheduling Model

READ

# HEALTH & SAFETY GUIDEBOOK

- Why is the Guidebook important?
- What is the science and rationale behind the guidance?
- Why is it critical to bring students back to schools?
- How can we move from challenge to innovation?

## Cohorts for Safe Learning

How can we structure student groups to maximize safety

- ✓ Cohorting
- ✓ Cohort Mixing
- ✓ Small Group Targeted Support
- ✓ Picking a Scheduling Model

READ

# A Deeper Dive into Cohorts with our State Board President, Dr. Linda Darling Hammond



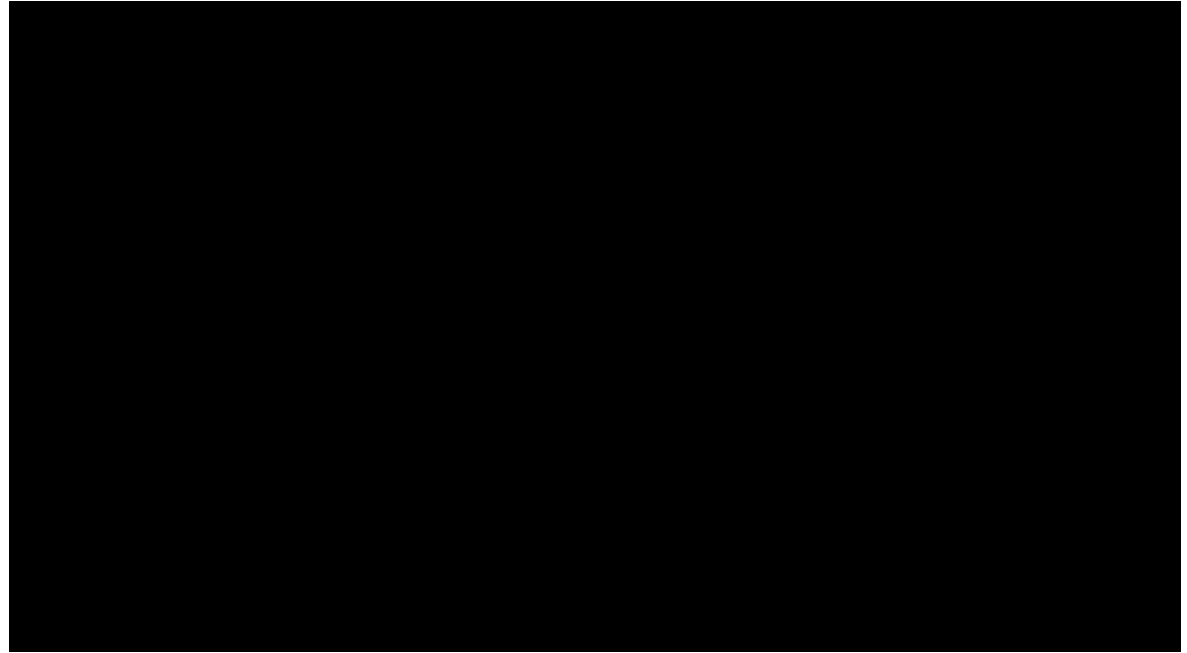
# COHORTS FOR SAFE LEARNING

## Cohorts for Safe Learning

How can we structure student groups to maximize safety

- ✓✓ Cohorting
- ✓✓ Cohort Mixing
- ✓✓ Small Group Targeted Support
- ✓✓ Picking a Scheduling Model

READ



# Continuity of Learning

Resources to Support California Schools Reduce Risk and Accelerate Learning



[k12playbook.ccee-ca.org](https://k12playbook.ccee-ca.org)

## Health & Safety Guidebook

NEW

Minimizing risk.

READ

## Distance Learning Playbook

No in-person interaction.

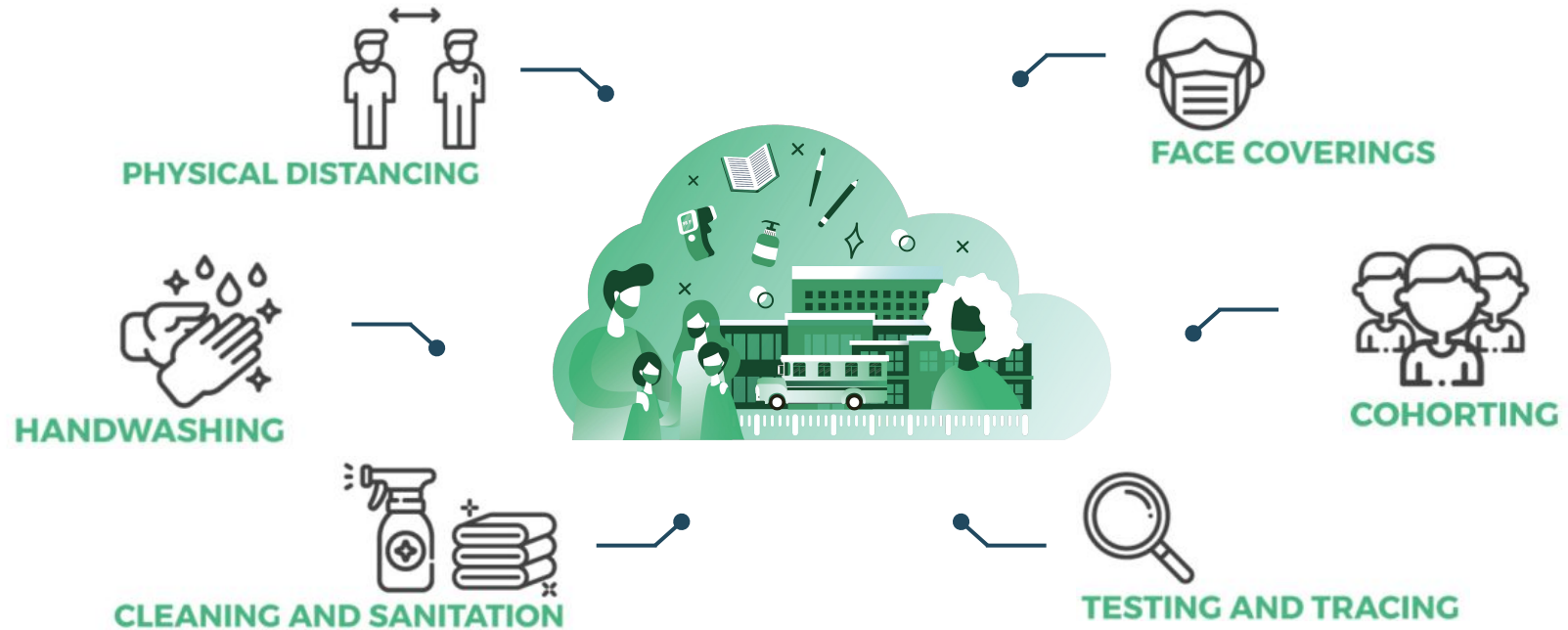
READ

## Hybrid Learning Playbook

Some in-person interaction.

READ

# SIX KEY CONSIDERATIONS



# DOMAINS OF THE GUIDEBOOK

## Community Health Context

When can students and staff return to campus?

- ✓ Establish Key Liaisons
- ✓ Criteria for Reopening
- ✓ Elementary School Waiver
- ✓ Early Return for Small Groups
- ✓ Special Circumstances
- ✓ Criteria for Considering Closure
- ✓ Child Care on Campus
- ✓ Site Specific Protection Plan
- ✓ Transparent Communications

READ

## Facilities & School Operations

How do we prepare for the return to campus?

- ✓ Use of Space
- ✓ Nutrition / Meal Services
- ✓ Cleaning and Disinfecting
- ✓ Ventilation
- ✓ Transportation
- ✓ Reporting an Outbreak
- ✓ Procurement of Supplies
- ✓ Technology Considerations

READ

## Safe School Environments

What happens when we are back on campus?

- ✓ Protective Equipment
- ✓ Enhanced Hygiene Practices
- ✓ Preparing Staff
- ✓ Entry & Exit From Schools
- ✓ Daily Symptoms Screening
- ✓ Testing for COVID-19 & Reporting
- ✓ Non Allowance Activities
- ✓ Considerations for Families

READ

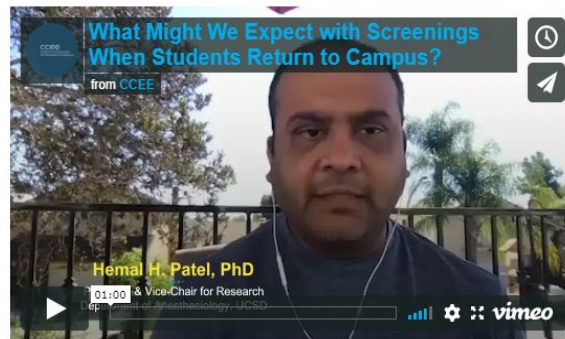
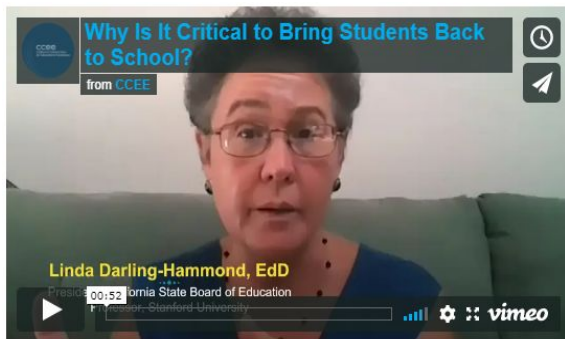
## Cohorts for Safe Learning

How can we structure student groups to maximize safety

- ✓ Cohorting
- ✓ Cohort Mixing
- ✓ Small Group Targeted Support
- ✓ Picking a Scheduling Model

READ

## ▶ Video Series: Experts Explain The Science Behind The Guidance



# SAMPLE LETTERS

## Community Health Context

### When can students and staff return to campus?

- ✓ Establish Key Liaisons
- ✓ Criteria for Reopening
- ✓ Elementary School Waiver
- ✓ Early Return for Small Groups
- ✓ Special Circumstances
- ✓ Criteria for Considering Closure
- ✓ Child Care on Campus
- ✓ Site Specific Protection Plan
- ✓ Transparent Communications

READ

## + ESTABLISHING TRANSPARENT COMMUNICATION

### TOOLS

- ➔ Sample letters for various scenarios ranging from local closures to cases on campus to reopening are available from SDCOE and from LACOE.
- Sample social media posts and visuals from LACOE.
- Sample social media posts, voice messages, web copy, and situational responses are available for free from this national communication firm. Make sure to edit sample text provided to align with current guidelines and state mandates.

### Update on COVID-19 Watchlist

Dear Parents/Guardians:

You may have heard the news that the County of San Diego was removed from the state's COVID-19 watchlist and wonder what it means for [district name].

While this is encouraging news that could help pave the way for us to reopening schools this fall, there are also some important things to keep in mind.

These numbers will need to stay within the acceptable range for at least 14 days before schools in San Diego County will be allowed to reopen without a waiver. Even if we are allowed to return to in-person instruction, it doesn't mean that we will right away. We have not yet set a date for when our programs will return to in-person learning.

The process for reopening remains the same. For the last several months, we have been developing reopening plans to ensure we do everything possible to ensure healthy environments for our students and employees. District leadership has also been working with our employee associations to develop memoranda of understanding that address conditions in our schools before employees return to school sites.

We are closely monitoring the situation and will continue to work with local public health as we move forward. I will also continue to share updates as they become available. You can also find the most current information on our district's reopening plans [add location].

I appreciate your flexibility and understanding as we adjust to these ever-changing conditions.

Sincerely,

[Superintendent name]

### Actualización Sobre la Lista de Vigilancia de COVID-19

Estimados Padres/Tutores:

Tal vez haya escuchado en las noticias que el Condado de San Diego salió de la lista de vigilancia estatal para COVID-19 y se está preguntando lo que esto significa para [district name].

Aunque es una noticia alentadora para acercarnos más a volver a abrir las escuelas este otoño, también hay puntos importantes que debemos tener en mente.

Los números tienen que permanecer dentro de la tasa aceptable por lo menos durante 14 días antes de que las escuelas del Condado de San Diego tengan permitido volver a abrir sin necesidad de una exención. Aunque tengamos permiso de regresar a clases presenciales, no quiere decir que lo haremos inmediatamente. Aún no se ha fijado una fecha para la cual nuestros programas regresen a la educación presencial.

El proceso de reapertura sigue siendo el mismo. Durante los últimos meses, hemos estado desarrollando los planes de reapertura para asegurar que se haga todo lo posible para garantizar un ambiente sano para nuestros estudiantes y personal. Los directores del distrito también han estado trabajando con nuestras asociaciones de empleados para desarrollar memorandos de entendimiento que abordan las condiciones de las escuelas antes de que los empleados puedan regresar a los planteles.

Estamos vigilando de cerca esta situación y seguiremos colaborando con los oficiales locales de salud pública a medida que avancemos. Seguiré enviándoles información actualizada conforme salga, y también puede encontrar la información más reciente acerca de los planes de reapertura de nuestro distrito en [add location].

Le agradezco su flexibilidad y comprensión mientras nos ajustamos todos a estas condiciones en constante cambio.

Atentamente,

[Superintendent name]

 Don't Know Where to Start? Try our Personalized Planning Guide

**ccee**  
California Collaborative  
for Educational Excellence

# Personalized Planning Guide

Answer YES or NO to questions below to receive a personalized plan with links to resources tailored to your current situation and needs. The e-mailed document can then be shared with other members of your leadership team and help you streamline your planning.

If you would like to receive all resources, please answer YES to all questions and we will email you the whole list.

 Email

 Organization

**START PERSONALIZED PLANNING GUIDE**



# WHAT'S NEXT?

- Ongoing updates
- The Continuity of Learning effort
- Support and technical assistance opportunities



[tinyurl.com/guidebook923](https://tinyurl.com/guidebook923)

Thank You!