

21CSLA Framework & Year 1 Deliverables

Presented by 21CSLA State Center
October 29, 2020

Rebecca Cheung
Nancy McTygue

AGENDA

Welcome! Please introduce yourself in the chat!

Polling our collective knowledge of 21CSLA

Background and Connection to the State System of Support

Leadership

Overview of Framework

Discussion

Exit Tickets

History and Background of 21CSLA

The original **California School Leadership Academy** was established by SB 813 (Hart) in 1983 and administered by the CDE until 2003.

Senate Bill 75 (Statutes of 2019) authorized the **21st Century California School Leadership Academy (21 CSLA)** under Education Code 44690, arguing that:

- Skilled school and district leaders are critical,
- Strong leadership is a key predictor of pupil achievement,
- Roles of principals and other school leaders have evolved, and
- Focused investments in leadership development will benefit pupils and school staff

2019–20 California State Budget authorized \$13.8 million in ongoing federal funds to support the 21 CSLA.

May, 2020: 21CSLA Center and Seven Regional Academies selected

Fall, 2020: 21CSLA Center and Regional Academies begin service to state

California System of Support

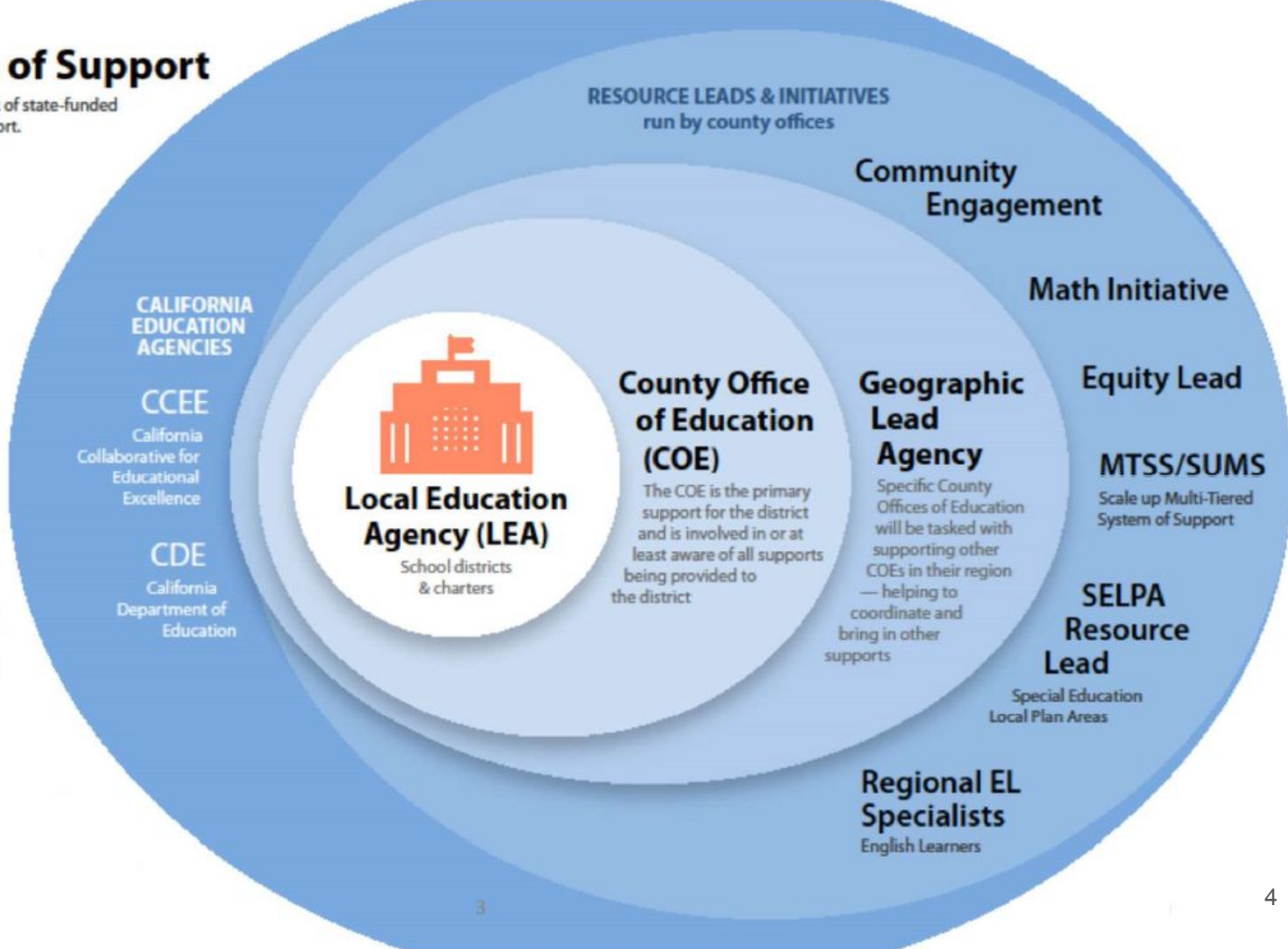
This graphic is intended to show the network of state-funded support providers under the System of Support.



LEVEL 2

DIFFERENTIATED ASSISTANCE

County Superintendents, the California Department of Education, and the California Collaborative for Educational Excellence provide differentiated assistance by working with school districts to address identified performance gaps among student



**CALIFORNIA
EDUCATION
AGENCIES**

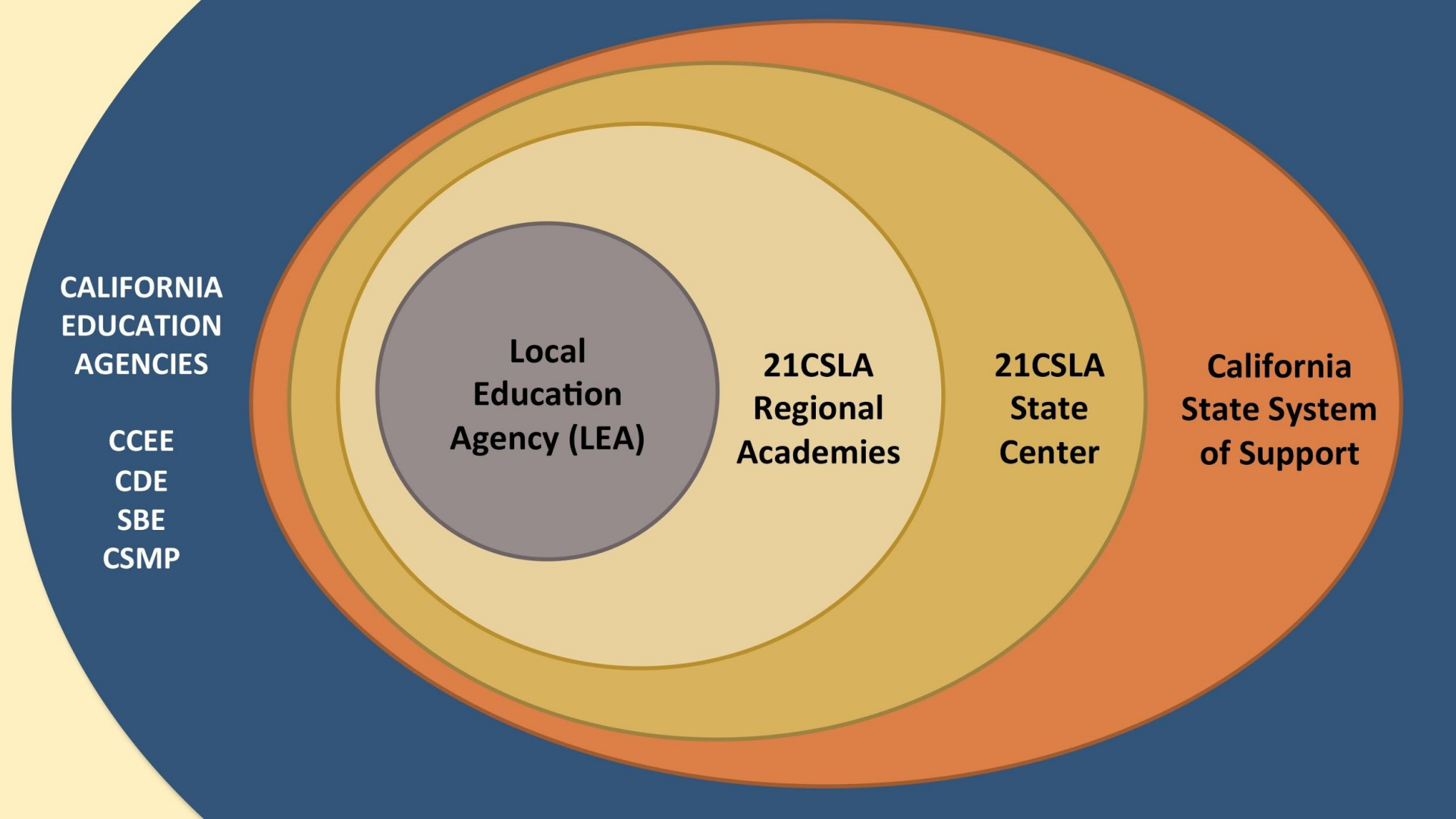
**CCEE
CDE
SBE
CSMP**

**Local
Education
Agency (LEA)**

**21CSLA
Regional
Academies**

**21CSLA
State
Center**

**California
State System
of Support**



System of Support

21CSLA



Level 3: Intensive Intervention

Intensive supports for LEAs with persistent performance issues



Level 2: Differentiated Assistance

Supports for LEAs to improve identified performance gaps among student groups



Level 1: Support for all

Resources, tools, and voluntary technical assistance available to all LEAs to improve student performance and narrow gaps in performance among student groups

21CSLA System of Support

Level 3: Individual Leadership Coaching

Intensive and individualized coaching support grounded in leadership for equity and improvement science.

Level 2: Communities of practice and localized professional learning offerings

Small, sustained, and facilitated role alike professional learning cohorts grounded in leadership for equity and improvement science. Localized professional learning based on regional needs.

Level 1: Support for all leaders

Digital resources and events available to all leaders in Title II schools and districts to improve leadership for equity.

21CSLA System of Support Framework

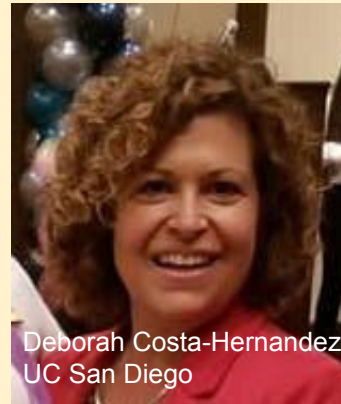
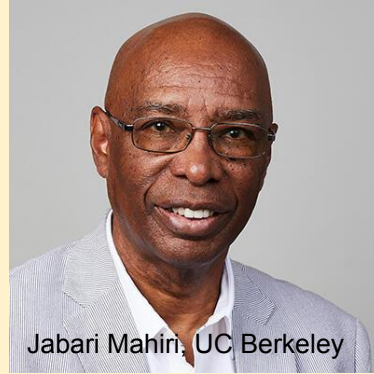
Note: This table is color coded to represent the three levels from the graphic in Slide 8.

Level 1: Support for all leaders	Area 1: 21CSLA Collaboration Structure
	Area 2: Advisory Committee
	Area 3: Distance and Digital Professional Learning Hub
	Area 4: 21CSLA Digital Resource Platform
	Area 5: 21CSLA Research
Level 2: Communities of practice and localized professional learning offerings	Area 6: Communities of Practice <i>(Year 1: Focus on equity and distance learning)</i>
	Area 7: Localized Professional Learning
Level 3: Individual support	Area 8: Leadership Coaching

Key Institutional Partners



21CSLA Center Leadership Board



The Regional Academies

7 Regions and their Lead Agencies



The 21CSLA Charge

“California school leaders must possess a broad range of knowledge, skills, and competencies to successfully support California’s diverse learners.”

21CSLA Impact Statement

21CSLA will develop a robust, equity-forward approach to expand the capacity of California leaders at all levels. Informed by improvement science, this initiative will improve instruction, schools, and districts to better meet the needs of underserved students, ultimately creating more equitable schools for underserved pupil groups.

21CSLA Guiding Principles

- Support productive critical dialogue across the state to address pervasive leadership challenges that impede student learning, especially for underserved student populations.
- Focus on leadership for equity, including issues of instruction, at 3 levels: teacher leaders, site leaders, and district leaders.
- Models and builds capacity in alignment with the CA Quality Professional Learning Standards (QPLS) and culture of continuous improvement.
- Differentiated design that is informed by local needs and job embedded.
- Develops and models alignment with priorities of CDE, CCEE, and SBE.

More Information

Link to website:

<https://gse.berkeley.edu/21csla-state-center>

Link to sign up for the mailing list:

<http://eepurl.com/gY5qgX>

Discussion Questions and Feedback

- How can 21CSLA be connected to the other projects and initiatives of the SOS?
- How can the SOS leverage the work and resources of 21CSLA to enhance other initiatives?
- What questions and feedback to you have?

Exit Ticket

https://berkeley.qualtrics.com/jfe/form/SV_6Xd4G6EggakdfFP