

Hot Topic Session 8:

Implementing Best Practices for Family Engagement in Distance Learning

Presented by: Jennifer Gateley

San Bernardino County Superintendent of Schools

Program Manager: System of Support

Session Topics



1. Parent Partnerships in Distance Learning
2. Role Models for Success in Distance Learning
3. Leveraging Family Engagement Strategies in Distance Learning

Parents are the ultimate
role models for children.
Every word, movement
and action has an effect.
No other person or outside
force has a greater
influence on a child than
the Parent.



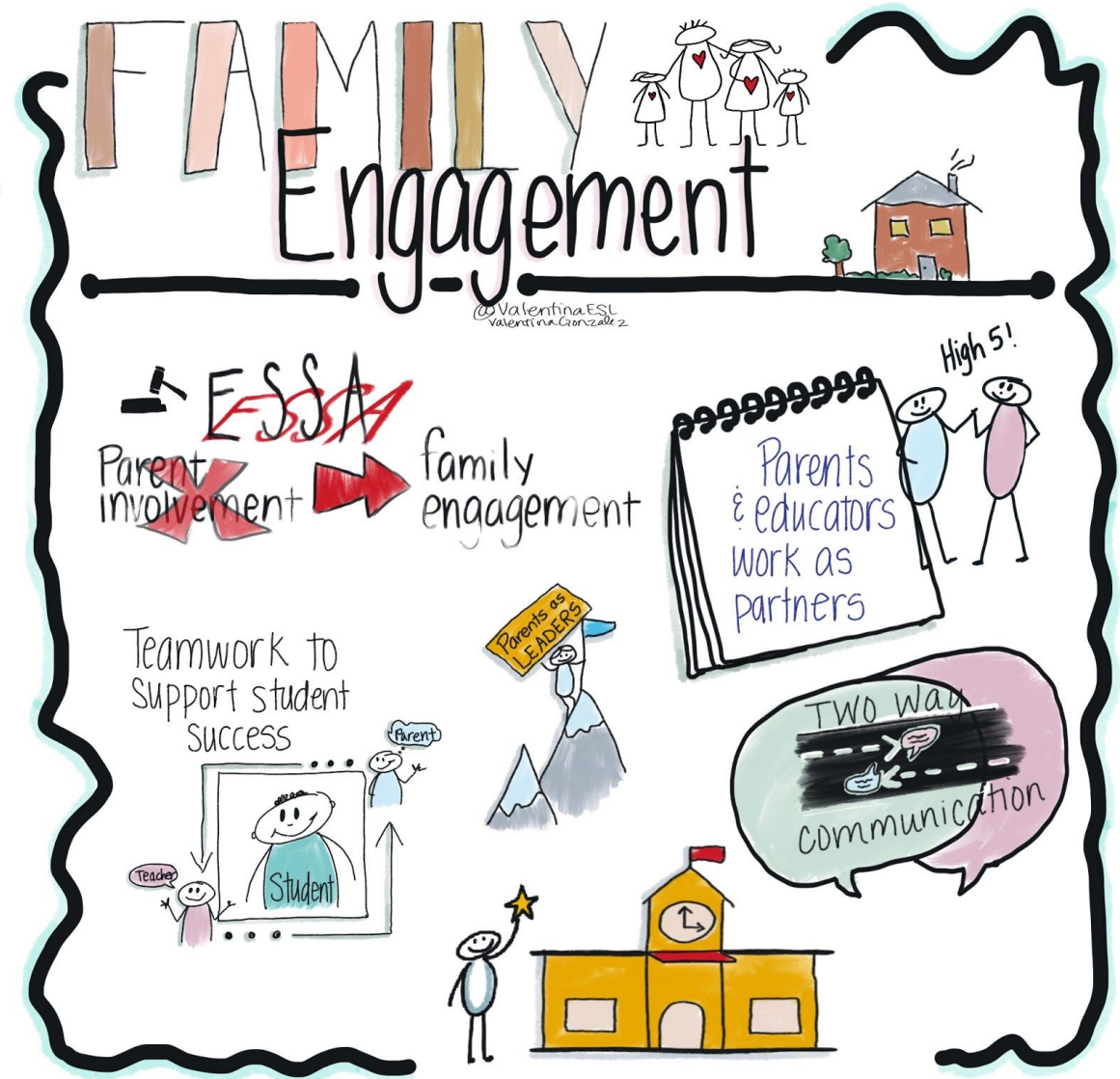
Family Engagement

Family engagement is the process used to build genuine relationships with families.

Relationships with families support overall family well-being and children's healthy development.

When families are engaged, partnerships are created that have a common focus—helping children grow and thrive.

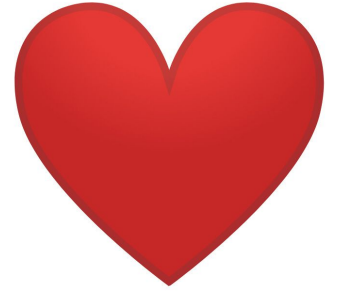
www.childwelfare.gov



How do we leverage best practices for Family Engagement in Distance Learning?



1. Strengthen Relationships with Families



★ Be Authentic -

- The goal is to truly engage families, not just involve them

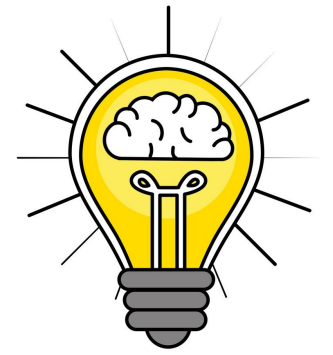
★ Be Responsive -

- Communicate often and develop opportunities to connect with families

★ Be Relational -

- Discover what makes each family unique and special

2. Build Capacity with Families



- ★ Flexibility is the New Normal -
 - Accept the challenges families might be facing and provide reasonable accommodations when possible
- ★ Collaboration is Key -
 - Distance Learning is process that should be done with families, not to them
- ★ Support for All -
 - Parents may need help with resources, skills, and strategies too

3. Support Families to Focus on Learning



- ★ Be Realistic in What You are Asking -
 - Meet families where they're at
- ★ Be a Role Model in Teaching and Being -
 - There is power in positivity and perseverance
- ★ Maintain a True Equity Lens -
 - Incorporate a culturally responsive approach with families

Take-Away Task



Engage the family as a partner in Distance Learning:

- ❑ Leverage Back to School Night and Open House virtual events to provide essential information to families
- ❑ Make a plan to schedule at least one individual check in appointment with families
- ❑ Identify school and community organizations that can provide responsive support to families
- ❑ Attend school events where families will be present and engaged
- ❑ Explore ways to encourage and recognize positive family efforts and experiences

Join us for our next session...

- Session 1** Establishing a Foundation for Distance Learning
- Session 2** Addressing Equity in Distance Learning
- Session 3** Developing Positive Student and Family Mindsets for Distance Learning
- Session 4** Fostering Student and Family Well-Being in Distance Learning
- Session 5** Prioritizing Core Instructional Values in Distance Learning
- Session 6** Supporting Early Learners in Distance Learning
- Session 7** Engaging Adolescents in Distance Learning
- Session 8** Implementing Best Practices for Family Engagement in Distance Learning
- Session 9** Family Engagement in Distance Learning: Exemplars From the Field