

STARTING SOON:

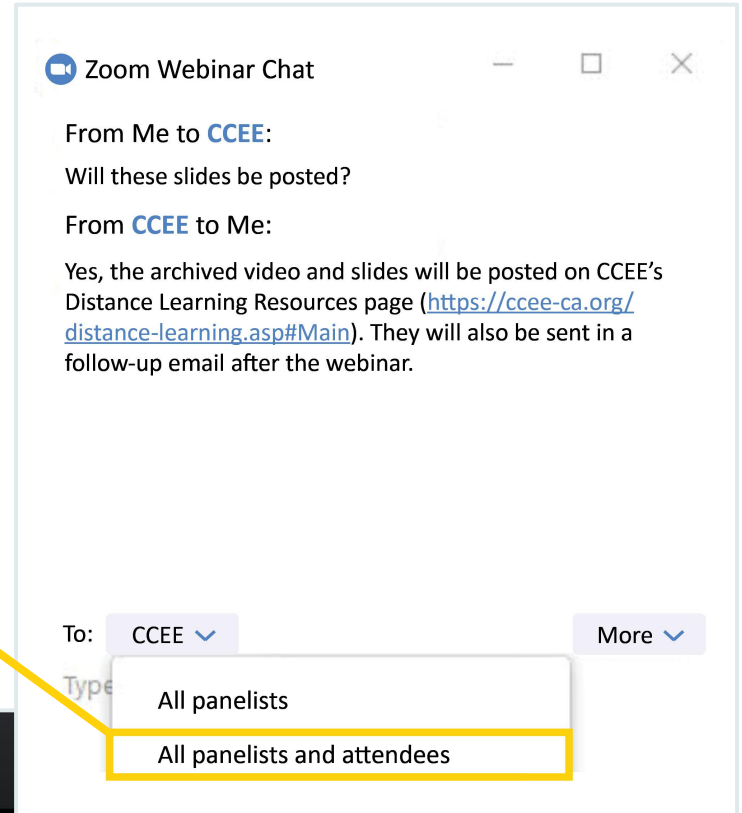
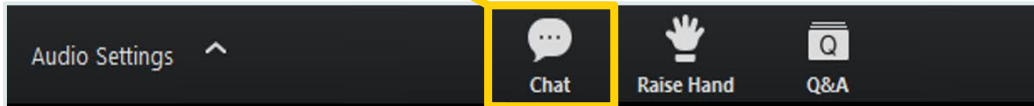
Tips for Learning Acceleration:
An Introduction to the
Playbook for Accelerating Learning

August 31, 2021

USING ZOOM CHAT

Click on the drop down button and click **ALL PANELISTS AND ATTENDEES**.

In your controls at the bottom window, click **CHAT**.



PRESENTERS



SUJIE SHIN

Deputy Executive
Director
CCEE



DR. JAMES MCKENNA

Assistant Director,
Professional Learning and
Leadership Development
CCEE



DR. DANIEL ASSISI

Managing Partner
Copernicus



DR. NICOLE TEMPEL ASSISI

Senior Advisor
Copernicus

SUPPORTING LEAs WITH ACCELERATING LEARNING

- Tools for LEAs to maximize time
- Strategic and practical advice
- Practical tips for academic leaders
- Every learner, every day

SESSION OUTCOMES

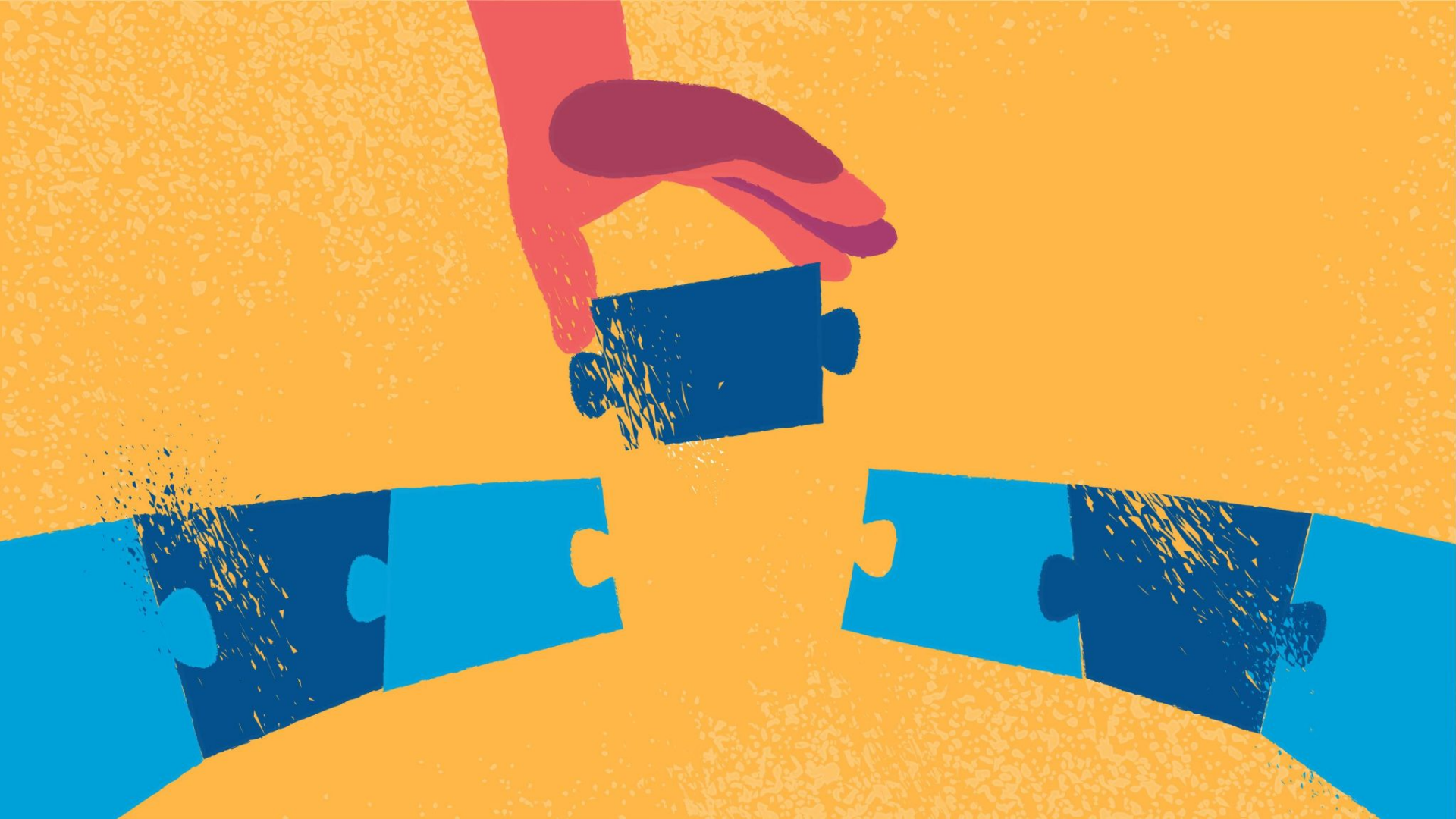
- What does it mean to accelerate learning?
- What models exist?
- What should LEAs consider as they seek to accelerate learning?
- What is the Playbook for Accelerating Learning (PAL)?
- How do you use the PAL?

POLL: What outcome are you most interested in?

WHAT IS LEARNING ACCELERATION?

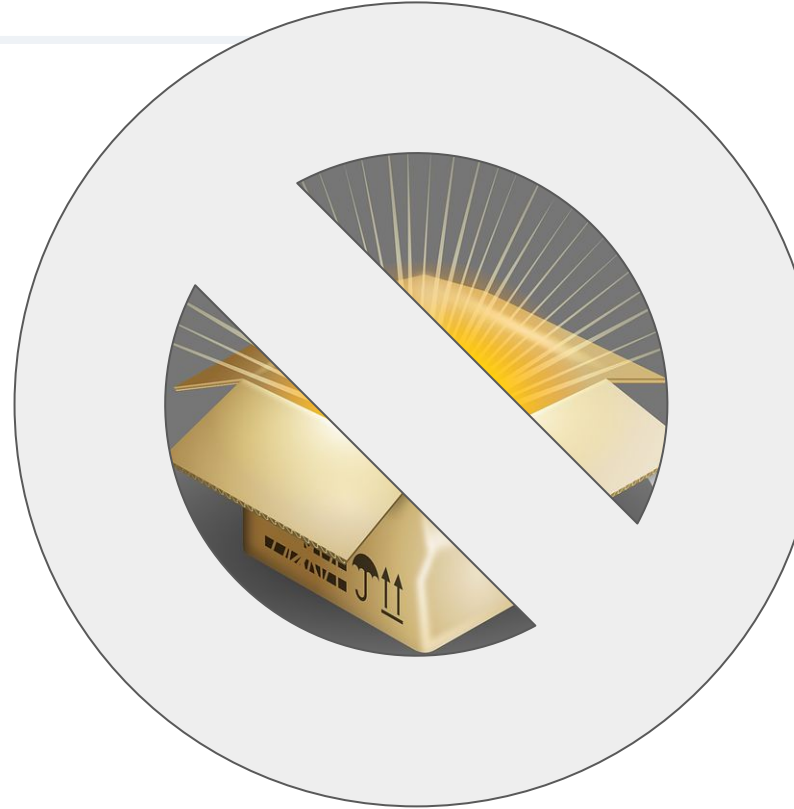
FOCUS

New Learning



WHAT IS NOT LEARNING ACCELERATION?

- A Program in a Box
 - Requires mental and behavioral shifts
 - Contextualized



EASY TO ACCESS: WEB OR DOCUMENT

CCEE's Playbook for Accelerating Learning

Educators have always experienced and stepped up to the challenge of how to best tailor instruction to achieve the best possible outcomes for students. The COVID-19 pandemic has exposed growing disparities, and we must redouble our collective efforts to ensure all students, regardless of background or current learning level, can thrive. The Playbook for Accelerating Learning (PAL) was created to fill the space between our current challenges and the joyful and successful future we envision and deem possible for all our students.

In the following sections, the PAL will:

- review current research on how best to improve student outcomes,
- lay out models that practitioners can use to accelerate learning in their systems,
- propose ways in which they can plan with their teams in the pursuit of such goals,
- envision how their efforts may take place during and beyond the school day, and
- suggest ways in which LEAs can leverage community-based organizations and engage families as partners in the work.

By making these resources available in a concise and actionable format, the CCEE hopes to assist instructional leaders in California shorten their preparation period for accelerating learning and promoting the outcomes all students deserve.

MAKING A SHIFT	REMEDATION VS. ACCELERATION	SO, HOW DO WE ACCELERATE LEARNING?
After a year of interrupted learning imposed by the COVID-19 pandemic, more students than ever are experiencing learning gaps. Remote and hybrid learning have increased the demands placed on families and students during the learning process. One study by McKinsey estimates that students will experience 4-5 months of learning loss on average, compared to typical in-class learning.		
Students of color and low-income students are significantly more affected. When compared with expected learning gains from full-time, in-person learning, the McKinsey study indicates that white students will experience the equivalent of 4 months of lost learning in math and 3 months in reading on average. Latinx and Black students lost between 5-6 months and for students with low-income backgrounds, the picture is even grimmer: the McKinsey study predicts the loss of 6 to 7 months worth of learning.		

Web

Playbook for Accelerating Learning
High expectations and grade-level content

TABLE OF CONTENTS

Introduction	2
MODELS TO INSPIRE	6
Blended Model	8
Tutoring	9
Burst of Time	10
Student Agency / Independent Learning	11
Engaging Families in Learning Acceleration	13
PLAN, ENGAGE, AND ALIGN	15
PRIORITIZING CONTENT	19
ADAPTING YOUR SCOPE, SEQUENCE, AND PACE	22
DIAGNOSE UNFINISHED LEARNING	24
FOUNDATIONAL READING	28

Downloadable Document

Continuity of Learning

Resources to Support California Schools Reduce Risk and Accelerate Learning



PLAYBOOKS



NEW
Playbook for Accelerating Learning

Accelerating learning.

READ

UPDATED
Health & Safety Guidebook

Minimizing risk.

READ

The Field Guide

Learning Acceleration, Equity, and Well-Being

READ

UPDATED
Leading Forward Conference

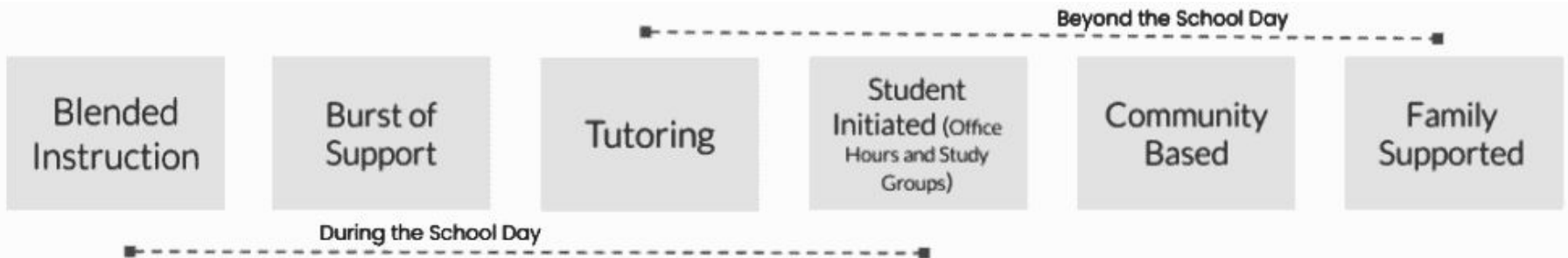
Virtual learning series.

READ

k12playbook.ccee-ca.org

MODELS TO INSPIRE

- There are different ways of accelerating learning
- Match your strategy to your system
- Consider whole-group vs. targeted intervention
- There are no silver bullets



BLENDED LEARNING FOR ACCELERATING LEARNING

- Leverage technology to provide time to personalize instruction to students' needs and use small-group or individual intervention and time.
- Tools:
 - Blended Learning Universe: [tool to design your blended program](#)
 - [Webinar](#) with Tom Armelino and Catlin Tucker
- Real World Example: Lindsay Unified School District

TUTORING

- High-impact tutoring leads to substantial learning gains for students by supplementing (but not replacing) students' classroom experiences.
- Tool: Video for [implementing a high impact tutoring program](#) by National Student Support Accelerator & CCEE
- Real World Example: LAUSD leverages teachers to hold after school tutoring for 1st-3rd grade reading

BURST OF TIME

- Provides extra learning time in smaller groups without taking away from core instruction during the school day. Often, this instruction takes place during breaks and on weekends with qualified teachers using targeted instruction.
- Tool: [Write up of Acceleration Academy](#)
- Real World Example: Cajon Valley Union School District

STUDENT AGENCY

- Through office hours and structured study groups, some LEAs are offering structures while also teaching students to take ownership of their learning pathway.
- Tool: [CCEE's Field Guide section on student agency](#)
- Real World Example: Da Vinci Schools

COMMUNITY- BASED SUPPORT

- Identify ways to partner with community-based organizations (CBOs) and leverage assets in the community to support student learning.
- Tool: CCEE PAL section on [CBO engagement](#)
- Real World Example: San Francisco Community Hub Initiative

PARENT ENGAGEMENT

- Encouraging family engagement in learning is more than common courtesy. Given the investment in technology and the learning that happened in our systems this past year, this is a powerful tool for continued support and acceleration.
- Tool: [Family-friendly grade-level learning overviews](#) from Seek Common Ground
- Real World Example: Humboldt Elementary's data and engagement work

FURTHER COMPONENTS OF THE PLAYBOOK



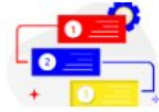
MODELS TO INSPIRE

There are different ways of accelerating learning. You can do more than one.



PLAN, ENGAGE & ALIGN

Learning acceleration is a collaborative endeavor that must align to your organization's priorities.



PRIORITIZING CONTENT

Prioritizing has everything to do with focus and understanding what standards have the most impact on student learning.



SCOPE, SEQUENCE & PACE

Scope, sequence, and pacing must be addressed in order to support the academic planning work to accelerate learning.



ASSESSMENT & DATA

Uncovering and addressing unfinished learning is key to bringing students into grade level work.



FOUNDATIONAL READING

Reading substantially impacts every aspect of our lives and therefore requires special consideration.



REFINE & SUPPORT

Leaders who engage in continuous improvement are better able to support teachers and students.



IMPLEMENTATION

How staff executes the vision in the classroom will be a critical aspect of your learning acceleration plan.



BEYOND THE SCHOOL DAY: FAMILIES

Encouraging family engagement is one of the best ways to create a positive learning environment for every student and support their success.



BEYOND THE SCHOOL DAY: CBO

Leveraging community based organizations can be a powerful component to improving student outcomes.

CLICK
AROUND:

→ Explore the PAL on your own for
2 minutes before Q&As

k12playbook.ccee-ca.org

QUESTIONS:

- How might you use the PAL in your LEA?
- What type of support would you need to be able to use the PAL with your LEA team?

KEY CONSIDERATIONS

- More than one model - and you can do more than one
- Collaboration matters
- High expectations and grade-level content are key
- Prioritizing standards \neq lowering the bar
- Quality, vertically aligned curriculum

KEY CONSIDERATIONS (continued)

- Assess to build bridges, not gateways for access
- Professional development
- Involve families and support networks

Questions?

OTHER RESOURCES



→ ONLINE COURSE: Developing and Implementing a Learning Acceleration Plan.

A free, on-demand CCEE course offered in partnership with UCSD.

(Includes a digital badge and certificate upon completion. CEUs also available upon request.)

OTHER RESOURCES

- PAL OVERVIEWS: County or region-specific overviews of the Playbook for Accelerating Learning by request.



(Please reach out to jmckenna@ccee-ca.org for more information.)

OTHER RESOURCES (UPCOMING)

- "DEEPER DIVES": short videos and podcasts with school leaders on best practices and lessons learned from implementing learning acceleration models.



CCEE's Leading Forward Podcast is available on all major platforms

Thank You!

PAL - PLAYBOOK FOR LEARNING ACCELERATION:
k12playbook.ccee-ca.org