

# CCEE Learning Paths

Tools and Tips for Blended Professional Learning

January 18, 2022

# Presenters



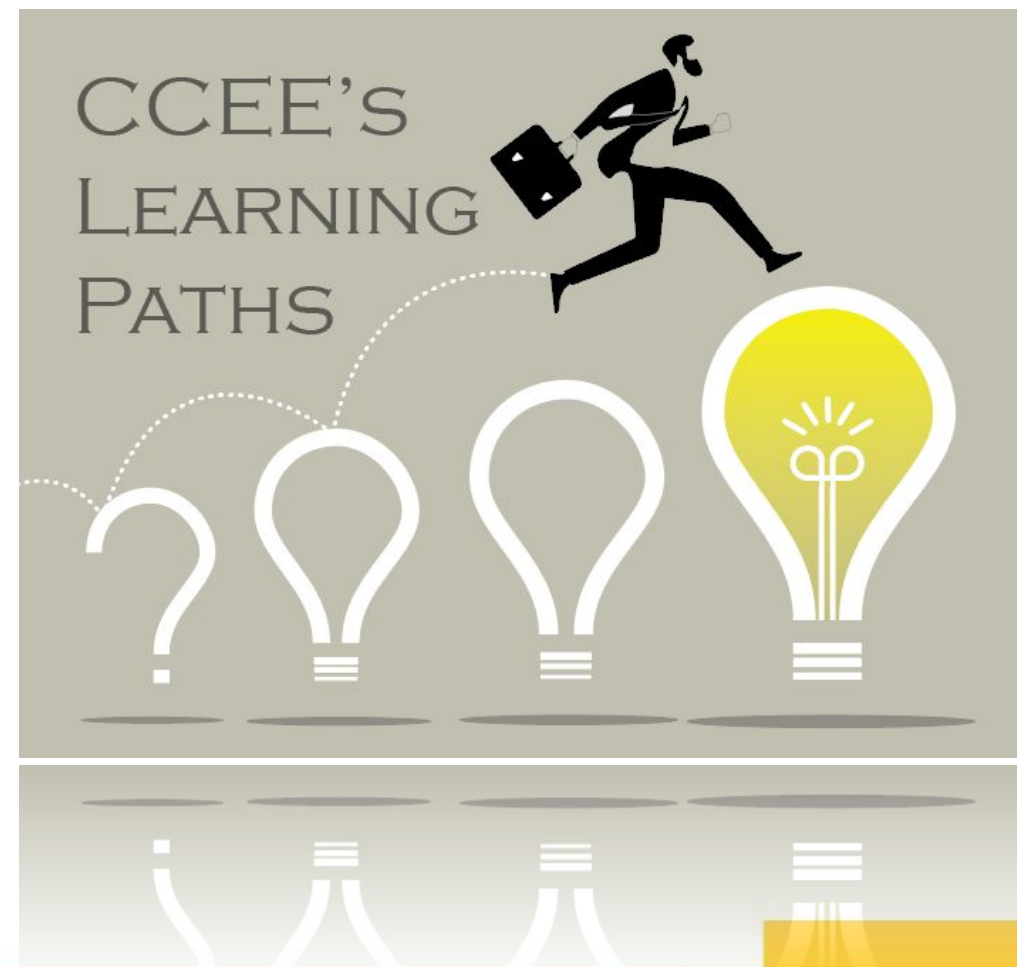
James McKenna  
Assistant Director,  
CCEE



Alesha Daughtrey  
Executive Director  
& Partner, CTQ

# Learning Intentions

- Spark your interest in learning paths as resources for professional learning
- Explain the what, where, why, and how of learning paths
- Provide you with next steps to use learning paths as part of your personal or organizational professional learning plans



# Today's Agenda

- Challenges to Professional Learning
- Overview of Learning Paths
- CTQ Learning Paths and Facilitation Guides
- Small Discussion Groups
- Q&A

# Challenges

Barriers to Professional Learning



CONTEXT

MATTERS







# What's your greatest challenge?



CONTEXT

MATTERS

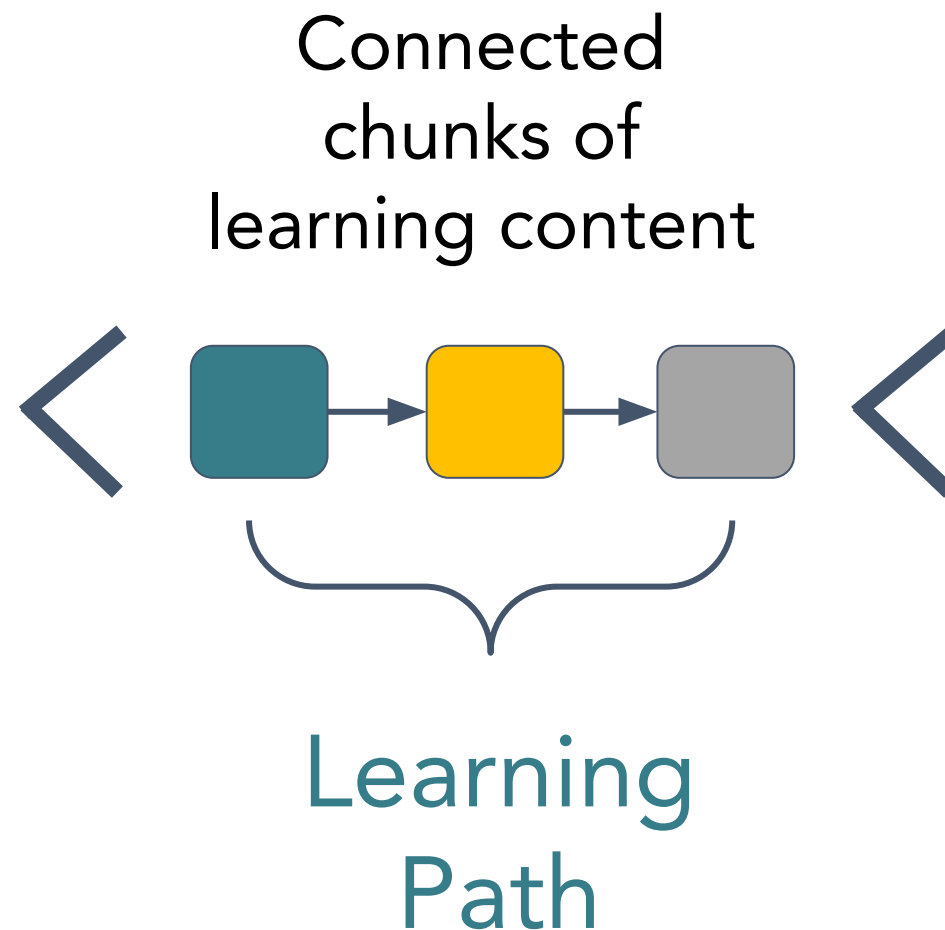
# Learning Paths

An Introduction

# The Big Idea



Single Resource



**Extensive  
Online  
Course**

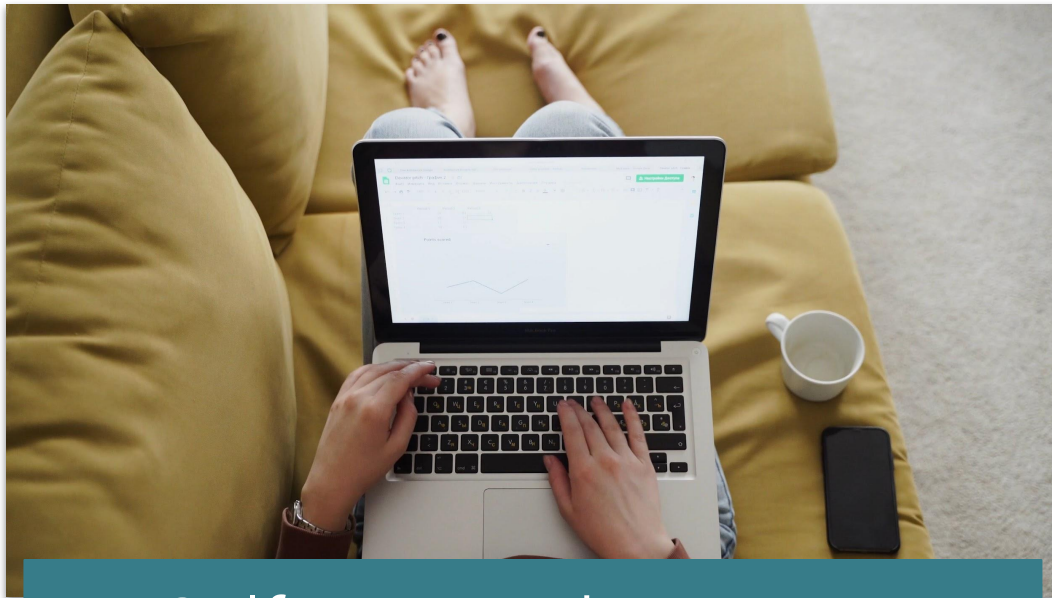
# Partners in this Work



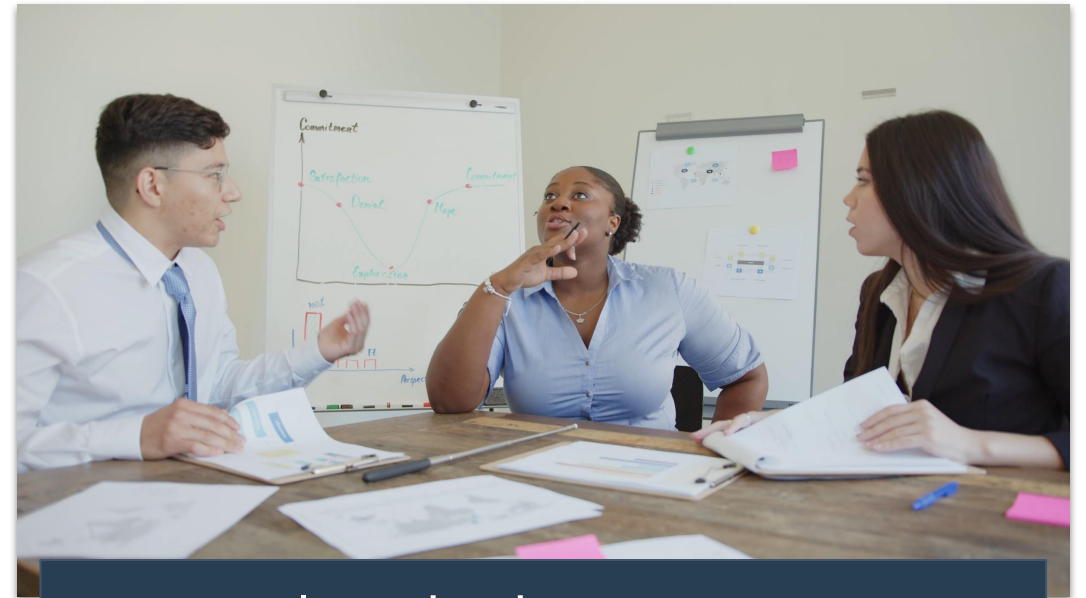
# Quick Preview



# Applications



Self-Directed Learning



Blended Learning



Every state invested  
in student-centered,  
educator-led innovation  
by 2030

# Our partnerships create innovative and sustainable change.

Alt-cert partnerships **prepare diverse, effective teachers** for rural schools

Two dozen district pilot and support hybrid teacher leadership roles that **combine teaching and leadership** work

Coaching and supports raise micro-credential earning rate by 30+ points and bring **personalized professional learning** to effective scale

Virtual coaching models accelerate **”grow your own” programs**

Schools using CTQ’s **collective leadership** approach to support change report up to 10 percentage point increases in student benchmark scores

9 in 10 CTQ partners **”strongly agree”** they have stronger improvement strategies, increased collective efficacy

# Our work addresses core challenges for public schools.

Rising rates of burnout and turnover among all educators, even though 1 in 4 teachers is ready to co-lead change with administrators

Limited or unsustainable ROI on massive district investments in traditional efforts to develop leadership capacity

Lack of supports and structures that help educators navigate crises and use them as opportunities to build effectiveness, resilience, equity, and transformation

Challenges in getting transformational change efforts off the ground and making them sustainable

# Exploring the pathways



Responsive teaching  
& learning



Thriving socio-emotionally



Formative assessment



Systems leadership



Advancing equity

# Pathway design addresses our barriers:



- Micro modules (9-25 min.) make learning accessible, bite-sized
- On demand format allows for anytime, anywhere engagement
- Embedded tools help educators apply learning
- Facilitation guides support team-building, learning communities, and “stacking” modules to meet targeted needs

# Let's explore your needs.



CONTEXT  
MATTERS



## Resources

- [CCEE Learning Paths Directory](#)
- [Subscribe to our mailing list](#) to receive our biweekly Friday Feature resources in your inbox.

# Questions? Comments?



James McKenna

Assistant Director, CCEE

[jmckenna@ccee-ca.org](mailto:jmckenna@ccee-ca.org)



Alesha Daughtrey

Executive Director & Partner, CTQ

[adaughtrey@teachingquality.org](mailto:adaughtrey@teachingquality.org)