



WELCOME EDUCATORS

Kern County Superintendent of Schools

PRESENTERS



Krista Herrera Ed.D.
Administrator of
Professional Learning
& Student Support

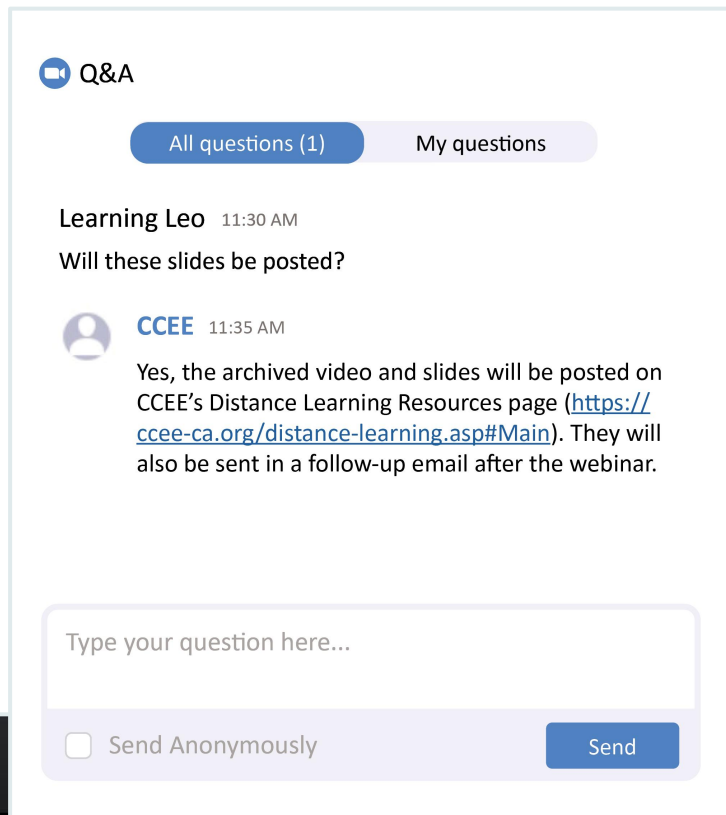
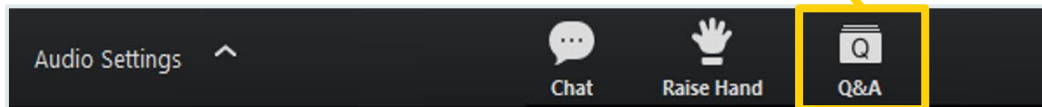


Lisa Gilbert, Ed.D
Deputy
Superintendent

Using Zoom Q&A

FOR QUESTIONS:

In your controls at the bottom of the window, click Q&A.



To begin this work we asked ourselves three questions.

1. How can we as a county office support our districts with distance learning?



CANVAS

OUR PARTNERS  OUR PLATFORM

Why Canvas?



01

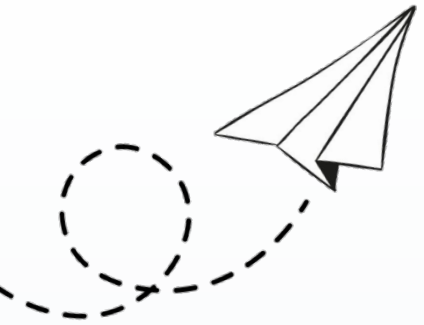
CUSTOMIZATION

Ability to customize to meet the needs of all students

02

USER SUPPORT

24/7/365 Support Line



03

COLLABORATION

A place to collaborate and share with others

04

INTEGRATION OF LEARNING TOOLS

Ensure teachers would be able to use the tools they rely on for instruction

2. What are the components of a quality distance learning lesson? What needs to be included to ensure all student groups can access the learning?

▼ WEEK 1: [Date - Date]	
	Week 1 Overview
	▶ 1.1 MONDAY
	1.1 Notice and Wonder 5 pts
	1.1 Video Rates and Fractions
	1.1 Practice 4 pts
	Week 1 Choice Board 20 pts
	▶ 1.2 TUESDAY
	1.2 Notice and Wonder 5 pts
	1.2 Video Proportional Relationships from a Graph
	1.2 Practice 4 pts
	Week 1 Choice Board 20 pts
	▶ 1.3 WEDNESDAY
	1.3 Notice and Wonder 5 pts
	1.3 Video Identifying the Constant of Proportionality from Equations
	1.3 Practice 4 pts
	Week 1 Choice Board 20 pts

What is the Choice Board?

This assignment gives you the freedom to select which activities you want to complete this week to show off your math skills!

- This Choice Board assignment has a total of 9 activities that you can pick from.
- Your goal is to complete at least 4 of the 9 activities by the end of the week.
- Be sure to complete at least one choice with the brain symbol (🧠) and one choice with the muscle symbol (💪) beside it each week.
- On Monday, simply choose the Submit Assignment button, on Tuesday through Thursday, choose Re-Submit Assignment.



For help submitting Choice Board Assignments, go to the [Classroom Expectations and Organization](#) page.



Choices for this Week:

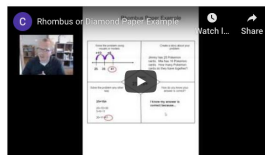
Choice #1: Rhombus Paper

Assignment Standard: 7.NS.1
Adapted from: SBAC Item Specifications

Materials: None

Directions: Create a "Rhombus Paper" for these two(2) problems.

- $2.6 + 7.3 + (-5.1) =$
- $\frac{5}{7} + (-\frac{3}{7}) =$



Submission:

You can share your thinking each day by typing a response, taking a picture of your work, or recording yourself.

Choice #2: Ratios

Assignment Standard: 7.FP.2
Source: Openmiddle.com

Materials: None

Directions:

Using the digits 1 to 9, fill in the boxes to make as many ratios as you can that are equivalent to 2:3.



Can you find more than one correct answer?

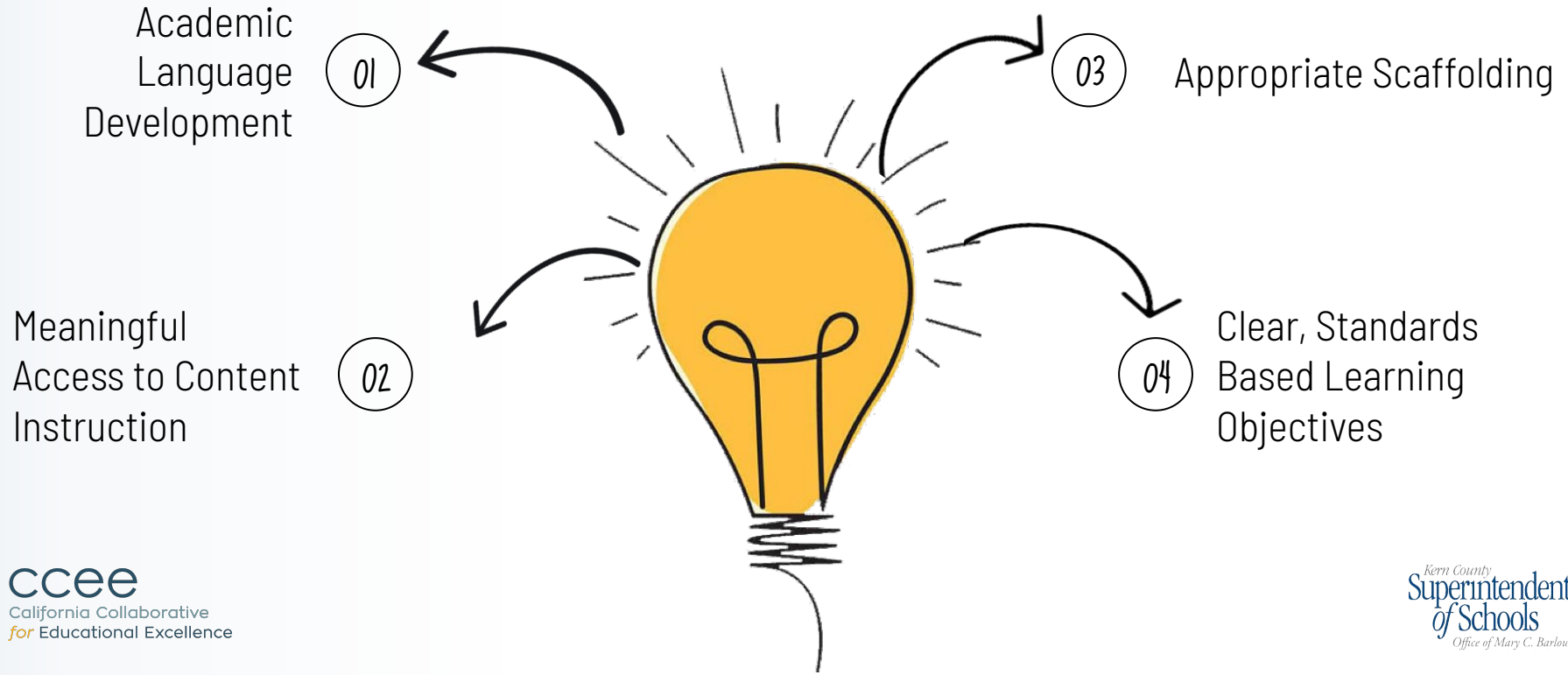
Submission:

You can share your thinking each day by typing a response, taking a picture of your work, or recording yourself.

Choice #3: Ratios

Assignment Standard: 7.RP.3

Considerations for ELD Lesson Development



3. How can we best support administrators, teachers, students and parents in using an online platform for continued learning?

ONBOARDING AND TRAINING FOR ADMIN



INITIAL ADMIN ONBOARDING

60 MINUTE COURSE ON
ADMIN TOOLS AND
BASIC OVERVIEW OF
CANVAS

ADVANCED ADMIN TRAINING

ADVANCED 60 MINUTE
ADMIN TRAINING
INCLUDING DESIGN
DECISIONS AND REPORTS



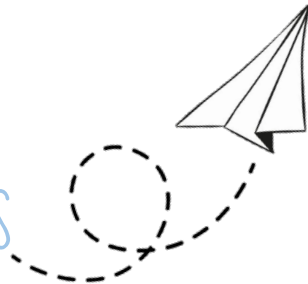
TEACHER ONBOARDING

INITIAL INTRO TO CANVAS FOR
ALL TEACHERS



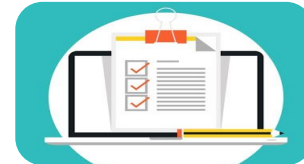
COMMUNICATION TOOLS

RECONNECT WITH STUDENTS
IN MEANINGFUL WAYS



CUSTOMIZING CURRICULUM

ADAPT KCSOS CURRICULUM
TO MEET YOUR NEEDS



GRADING

LEARN SPEED GRADER AND
GRADE BOOK IN CANVAS

ONBOARDING AND TRAINING FOR PARENTS AND STUDENTS



INITIAL LIVE TRAINING

How to access and complete distance learning through Canvas

RECORDED PARENT TRAINING

Recorded parent training offered to districts who would like their principals and site leaders to offer the opening for this training.



canvas



How can you access our
content?

Accessing the Content (Teachers & Parents)

For those **WITHOUT**
Canvas accounts:

Go to <https://kern.instructure.com/login/canvas>

Log in as a student here:

- Email: kcsoscanvas@gmail.com
- Password: Ready4Canvas!

***Video with directions on how to access curriculum at:*

<https://kern.instructuremedia.com/embed/f9e1d7f6-cf41-4999-b484-f26a2cf42f83>

For those **WITH**
Canvas accounts:

- Log in to Canvas account
- Go to Commons
- Type in "**California Continued Learning**" into search bar

-  Account
-  Admin
-  Dashboard
-  Courses
-  Calendar
-  34
Inbox
-  Commons
-  Studio
-  Help

California Continued learning

Most Relevant

Filter

45 results

CALCULUS

COURSE
Calculus
11 - 12 Grades
Christine Goedhart-Hum...

14 5

Social Emotional Learning
9-12

COURSE
9th-12th Grade Social Emotional Learning
9 - 12 Grades
Christine Goedhart-Hum...

21 9

ELA
12TH GRADE

COURSE
12th Grade ELA
12 Grade
Christine Goedhart-Hum...

2 1

ELA
6TH

COURSE
6th Grade ELA
6 Grade
Christine Goedhart-Hum...

20 17

5th Grade

COURSE
5th Grade ELA
5 Grade
Christine Goedhart-Hum...

27 13

9TH GRADE
ENGLISH LANGUAGE DEVELOPMENT

COURSE
9th Grade ELD
9 Grade
Christine Goedhart-Hum...

4 2

ALGEBRA FOUNDATIONS

COURSE
Algebra Foundations
7 - 10 Grades
Christine Goedhart-Hum...

9 3

7th Grade MATH

COURSE
7th Grade Math
7 Grade
Christine Goedhart-Hum...

24 13

4TH GRADE MATH

COURSE
4th Grade Math
4 Grade
Christine Goedhart-Hum...

30 21

1ST GRADE ELA

COURSE
1st Grade ELA
1 Grade
Christine Goedhart-Hum...

46 15

ELA
9TH GRADE

COURSE
9th Grade ELA
9 Grade
Christine Goedhart-Hum...

5 5

PRECALCULUS

COURSE
Pre Calculus
10 - 12 Grades
Christine Goedhart-Hum...

17 6

ALGEBRA II

COURSE
Algebra 2

Social Emotional Learning

COURSE
3rd-5th Grade Social Emotional Learning

7th Grade ELA

COURSE
7th Grade ELA

SOCIAL EMOTIONAL LEARNING

COURSE
K-2nd Grade Social Emotional Learning

11TH GRADE
ENGLISH LANGUAGE DEVELOPMENT

COURSE
11th Grade ELD

8TH GRADE
ENGLISH LANGUAGE DEVELOPMENT

COURSE
8th Grade ELD

What Questions Might
You Have?

THANKS!



Krista Herrera Ed.D.

krherrera@kern.org



Lisa Gilbert, Ed.D.

ligilbert@kern.org

Upcoming DL Consortium Webinars

**Professional Learning
Modules: Facilitating the
Foundations of Distance
Learning (SBCSS)**

Tuesday, August 11
10:30am-11:30am

**FLIP Supplemental Support
Modules: Facilitated Learning
with Integration &
Personalization (OCDE)**

Wednesday, August 12
10:30am-11:30am

**Units of Study for
Distance Learning: An
Integrated and Thematic
Approach (SDCOE)**

Friday, August 14
10:30am-11:30am



tinyurl.com/DLC-KCSOS



Thank You!