

culture & equity

PROJECT AT UCLA CENTER X

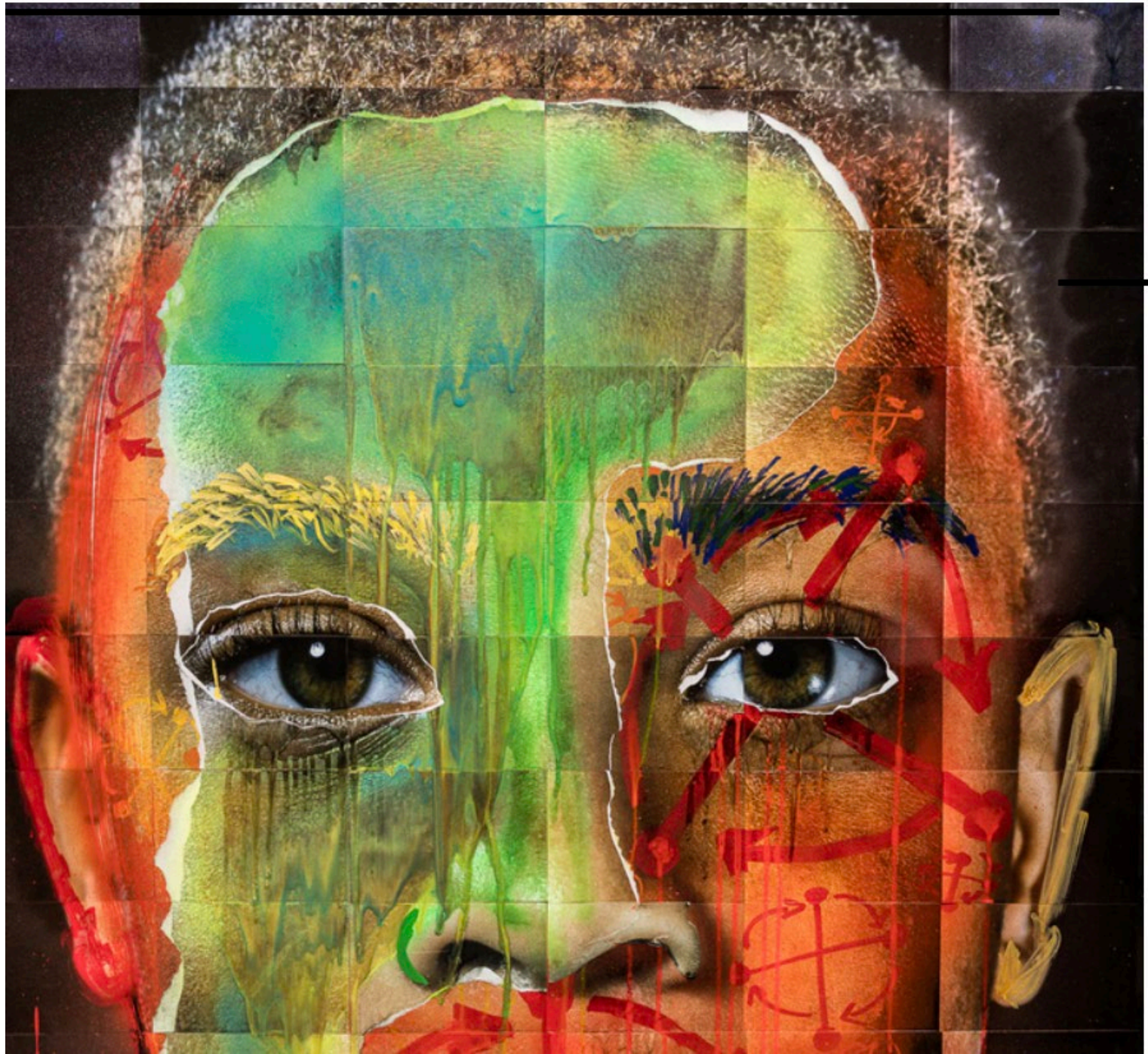
Extraordinary Leaders in Extraordinary Times

Tonikiaa Orange

orange@gseis.ucla.edu

Rita Suh

ritasuh@yahoo.com



Extraordinary Leaders

- Our children and community are suffering. The pandemic only highlights and perpetuates the oppression.
- Can't wait for a new strategy or program. We must make moves for our children and be unapologetic.
- Use the present to reimagine and take action to create ***enlivened*** spaces for Black children to not just get by but thrive.



Holding a Lens

- As leaders, hold a lens to self and determine **if my actions are perpetuating inequity or mitigating suffering.**
- As leaders, hold a lens to self and ask **how am I building a collective and prioritizing what is most important** at this moment for the students we serve?





What has been your experience?

Where have you seen extraordinary
leadership?

Dr. Kenya Williams



Culture is Everything!

Kenya Williams, Ed.D.

Assistant Principal, LAUSD

kenya.e.williams@gmail.com

"People don't condone what they have never seen."

Deion Sanders

Tasha McDonald

- Relationships before content
- SCV (Safe, Connected, and Valued)
- Emotion management

Tasha McDonald M.S./M.Ed.

Dean of Students

tmcdonald@hawthorne.k12.ca.us

“When you get to the end of your rope, tie a knot and hang on.”

Theodore Roosevelt



Extraordinary Leaders

- How are you prioritizing what is most important at this moment for the students you serve?
- What actions have you taken that supports centering Black children and their communities?

Dr. Rita Suh


- Re-prioritize
- Validating
- Relational Trust

Rita Suh, Ed.D.

Facilitator/Coach, Culture and Equity Project at UCLA Center X

Teacher Education Department, CSULB

ritasuh@yahoo.com



Ending
Thoughts



culture & equity

PROJECT AT UCLA CENTER X



@UCLACEP



[UCLACEP](https://www.facebook.com/UCLACEP)

