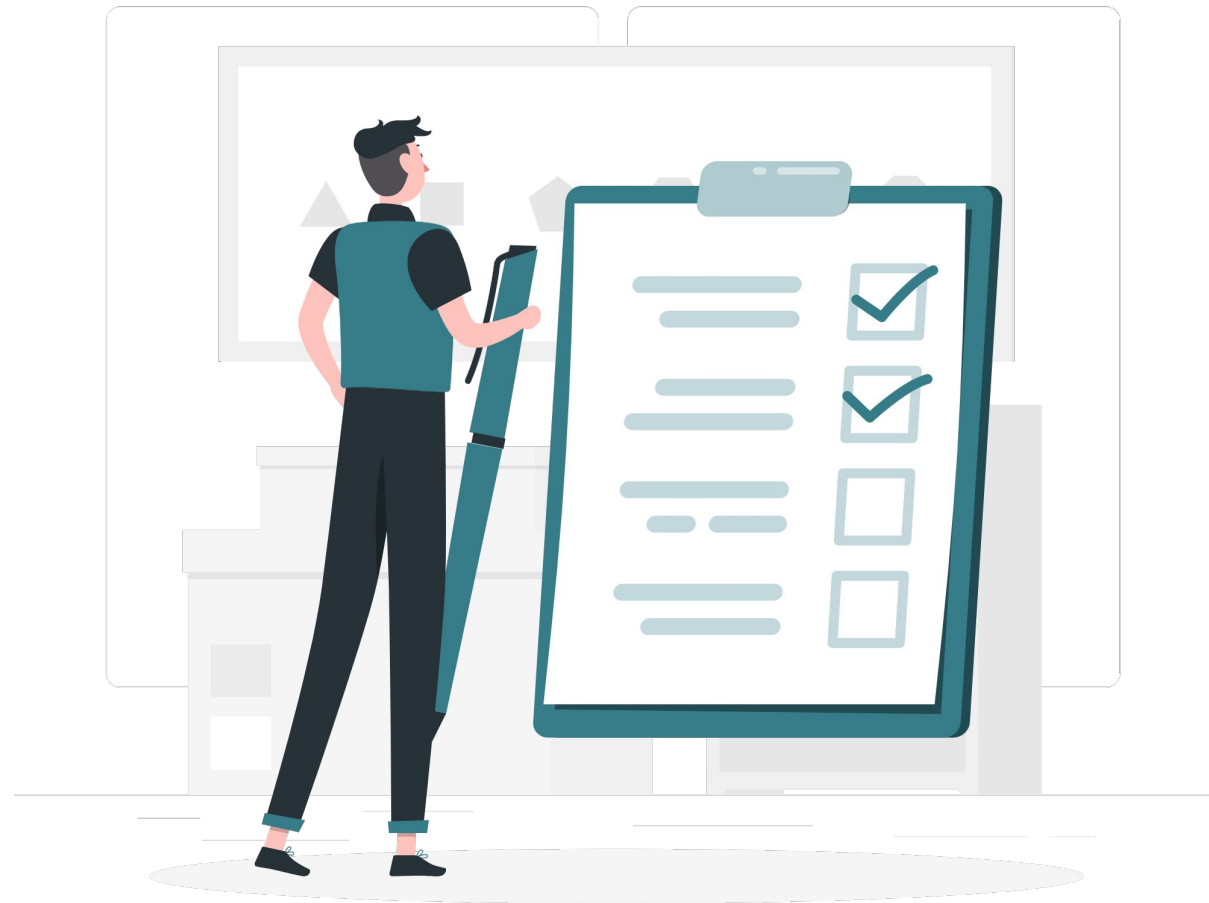


Direct Technical Assistance Updates

Teaching, Learning, and Leading Center (TLLC)

Agenda

- A. Direct Technical Assistance
Referral Process Map
- B. Next Steps

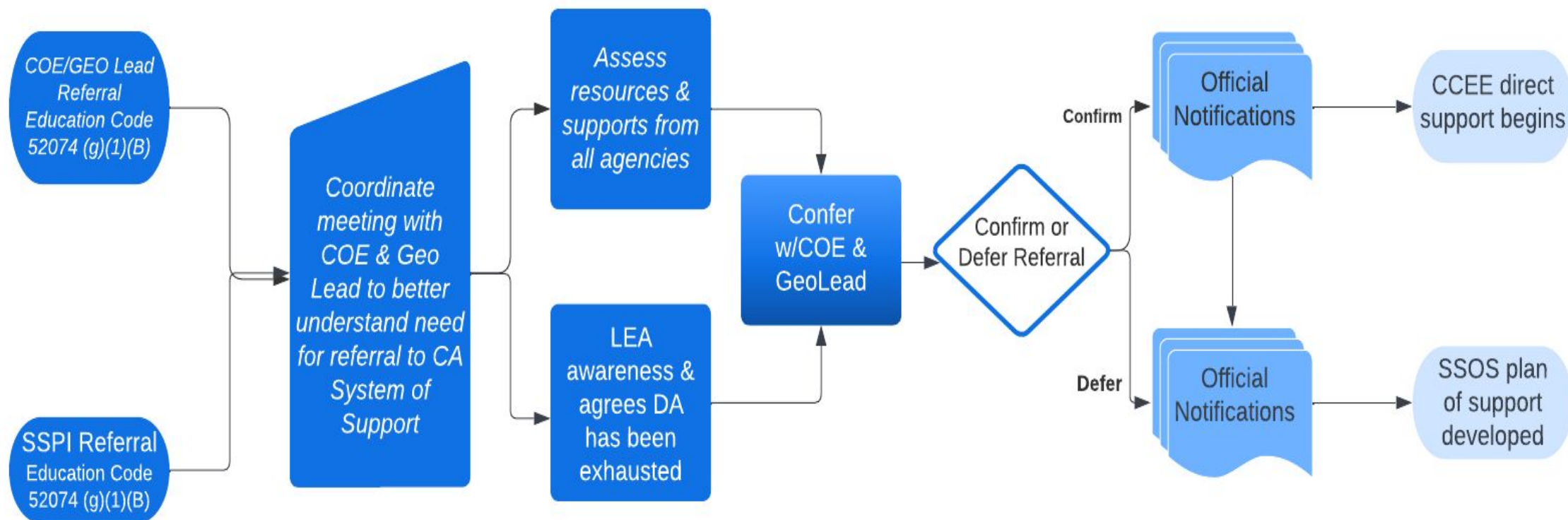


Dr. Stephanie Gregson, Deputy Executive Director

Direct Technical Assistance Referral Process Map



Referral Process Map



Draft Agreements of Roles/Responsibilities of Partner Agencies

CCEE

- ❑ Coordinates meeting with referring agency to better understand need for request to the CA Statewide System of Support
- ❑ Contacts GeoLead to make aware of referral
- ❑ Coordinates meeting with COE and Geo Lead to assess resources, supports and services
- ❑ Develops official notifications to CDE, SBE & DOF of referral and course of action from agencies
- ❑ Develops official agreements with all organizations, signed and documented with coordinated check-ins throughout process

County Offices of Education

- ❑ Ensures Differentiated Assistance has been exhausted
- ❑ Ensure LEA is aware of possible request and agrees that DA has been exhausted
- ❑ Assess potential ongoing financial resources and supports that will continue with LEA
- ❑ Determine with GeoLead if services requested can be provided via the CA Statewide System of Support
- ❑ Determine with CCEE level of support and intensive need to develop support plan
- ❑ Commit to being part of cross agency collaboration with COE, LEA, CCEE

Draft Agreements of Roles/Responsibilities of Partner Agencies

Geographic Leads

- ❑ Connect to CA Statewide System of Support to assess COE/LEA need
- ❑ Connect to CA Statewide System of Support to determine if other resources and supports can be utilized
- ❑ Determine with CCEE level of support and intensive need to develop support plan
- ❑ Commit to being part of cross agency collaboration with COE, LEA, CCEE



Next Steps

- Working with CA Statewide System of Support Core Working Group
- Presented at:
 - California County Superintendents Curriculum & Instruction Steering Committee
 - CA Statewide System of Support Geographic Leads Meeting
- Working with County Offices of Education that are considering referral
- Our team continuing in their professional learning

