

The Innovation, Instruction, and Impact (I3) Center seeks and amplifies best practices and resources from educators and schools to collaboratively provide students in California with what they need to thrive.



Sujie Shin

Deputy Executive Director, sshin@ccee-ca.org

Focus: Sujie leads the agency's Innovation, Instruction, and Impact Center, which is focused on identifying, scaling up, and sharing out resources and practices for educators, schools, and districts, that have demonstrated the power to improve outcomes for students.



Michelle Magyar, Ph.D.

Executive Advisor, mmagyar@ccee-ca.org

Focus: Michelle leads the implementation and management of fiscal and operational processes, as well as the development and coordination of strategic communication and engagement activities to support the agency.



James McKenna, Ed.D.

Assistant Director of Professional Learning & Leadership Development, jmckenna@ccee-ca.org

Focus: James develops, curates, and disseminates resources to support the learning of students and educators. His areas of focus include Universal Design for Learning and best practices in designing, delivering, and evaluating professional learning initiatives.



Ingrid Roberson, Ed.D.

Assistant Director of Research Learning, iroberson@ccee-ca.org

Focus: Ingrid leads CCEE's Data Research Learning Network to transform data and assessment practices in local educational agencies through data analysis support, coaching, and technical assistance.



Allan Taing, Ph.D.

Senior Manager of Research & Impact Analysis, ataing@ccee-ca.org

Focus: Allan provides research, data analysis, and program evaluation support for the agency. He leads cycles of data-based inquiry and manages ongoing project development, evaluation, progress monitoring, and implementation activities.

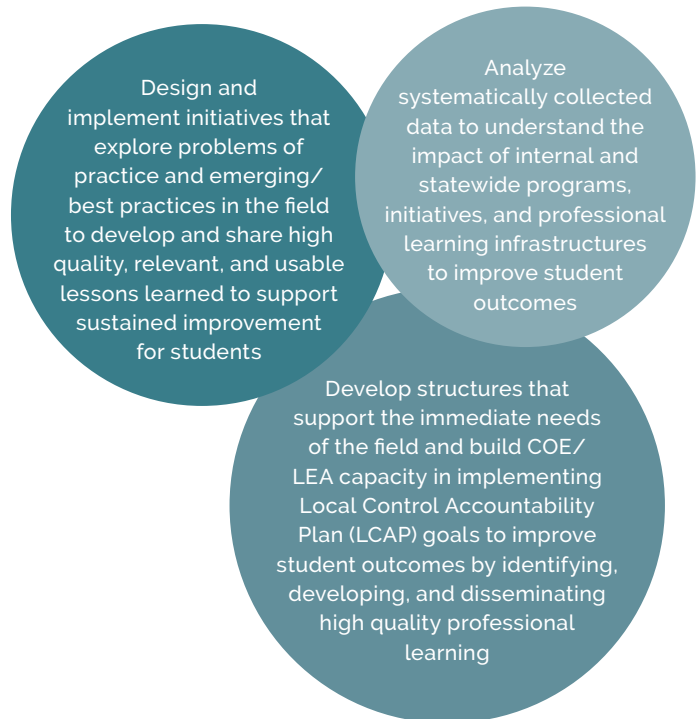


Dorcas Kong

Senior Specialist of Executive Projects, dkong@ccee-ca.org

Focus: Dorcas coordinates, manages, and facilitates various projects, collaborating with internal and external partners to support agency and statewide initiatives. In addition to supporting the Data Research Learning Network, she also serves as the lead for the Spotlights Project.

CENTER INITIATIVES



Sehrish Anjum

Program Specialist, Professional Learning, sanjum@ccee-ca.org

Focus: Sehrish provides project management support for the agency's professional learning initiatives, including CCEE's learning paths and microlearning modules. She also publishes CCEE's weekly Friday Five resource blast, designed to provide LEAs with evidence-based resources around a weekly theme.



Italo Ciccarelli

Program Specialist, Data and Impact, iciccarelli@ccee-ca.org

Focus: Italo supports the project management of I3 initiatives, including the analysis of survey data and evaluation projects.



Nhi Hang, Ph.D.

Program Specialist, nhang@ccee-ca.org

Focus: Nhi helps the team with researching and disseminating best practices. She also supports I3's work around building coherence and collaboration across statewide program evaluations.