

CCEE

California Collaborative  
*for* Educational Excellence

# Item 3: Teaching, Learning, & Leading Center Update



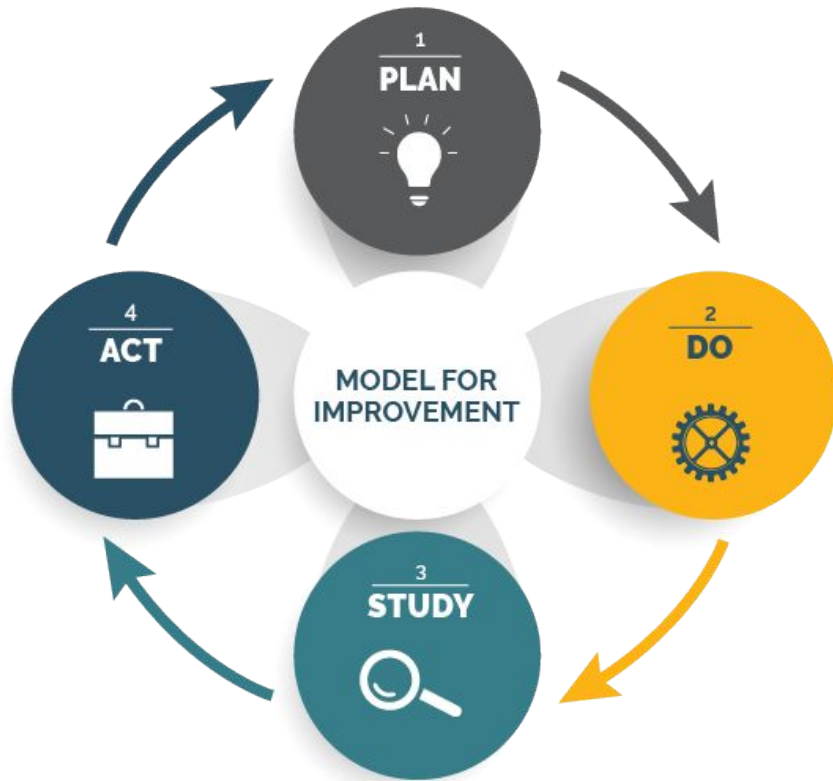
# Overview

- Current Districts in DTA
- Intensive Assistance Model
- Consultation & Transition Criteria

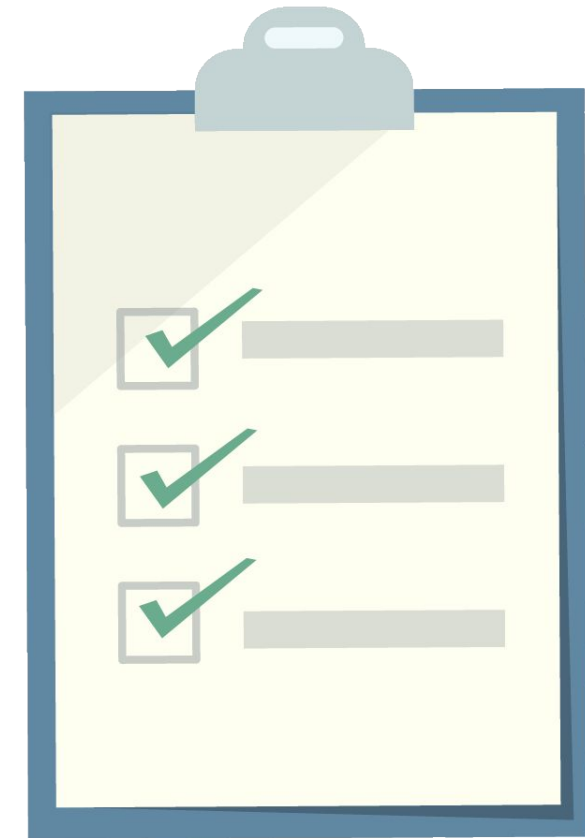


# Current Districts in DTA

# Quality Improvement vs Compliance



VS.



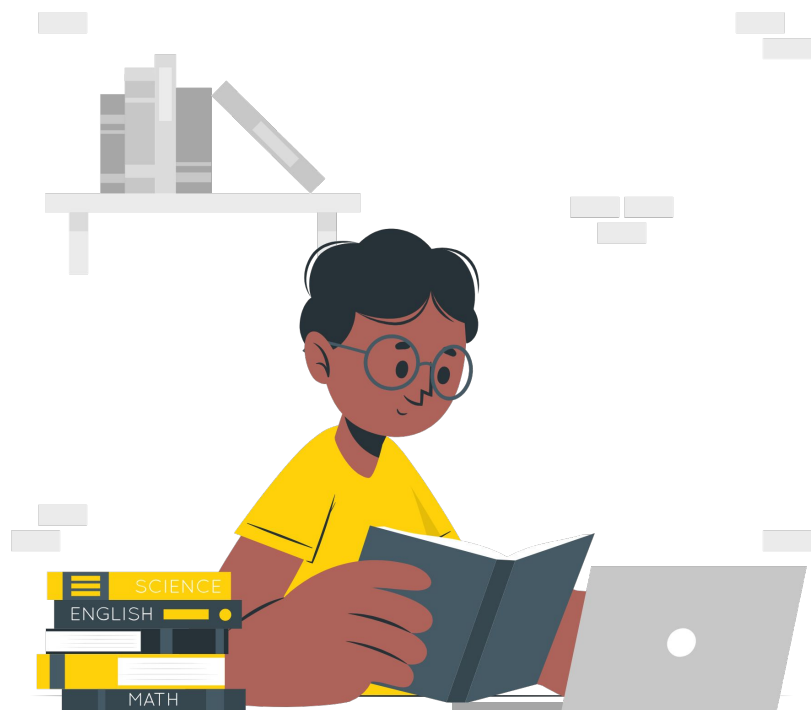
# Accountability: Internal vs External



VS.



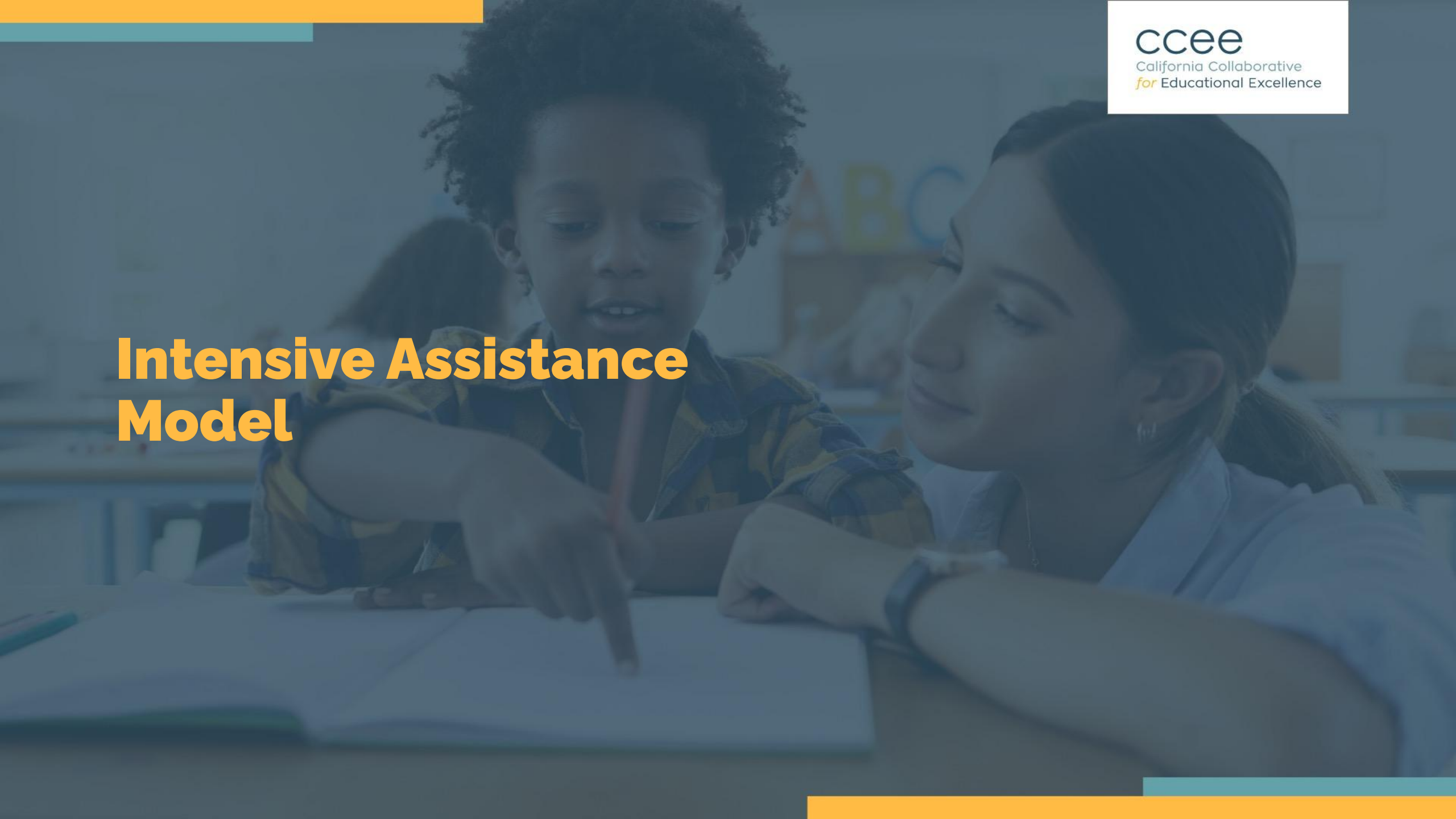
# Keep The Main Thing, The Main Thing



VS.



# Intensive Assistance Model



# Sharing Their Story

Nishimoto Elementary School - Madera Unified School District





# PACE Report



Heather Hough, Executive Director

Benjamin Cottingham, Associate Director

# Year 2 Implementation:

## Support Structures

- Principal Convenings
- Superintendent Professional Learning Network
- Using lessons learned
- Sharing the Stories

## The Site Work of Year 2:

- Continued focus on building authentic collaboration teams
- Response to Intervention
- 31 days of embedded coaching

# New Education Code Language - Consultation

# Education Code 52072 - New Language

(a) If a school district meets the criteria established pursuant to subdivision (g) of Section 52064.5 for three or more pupil subgroups identified pursuant to Section 52052 or, if the school district has less than three pupil subgroups, all of the school district's pupil subgroups, in three out of four consecutive school years, the California Collaborative for Educational Excellence shall determine, **in consultation with the school district and any provider of technical assistance** pursuant to Section 52071, if assistance from the California Collaborative for Educational Excellence is necessary. When making this determination, primary consideration shall be given to the needs of the pupils in the school district.

## LEA Notification

LEAs who are high priority under EC 52072 - three or more subgroups under performing for three of four consecutive years

Collaboration  
Letter

## Consultation Plan Development

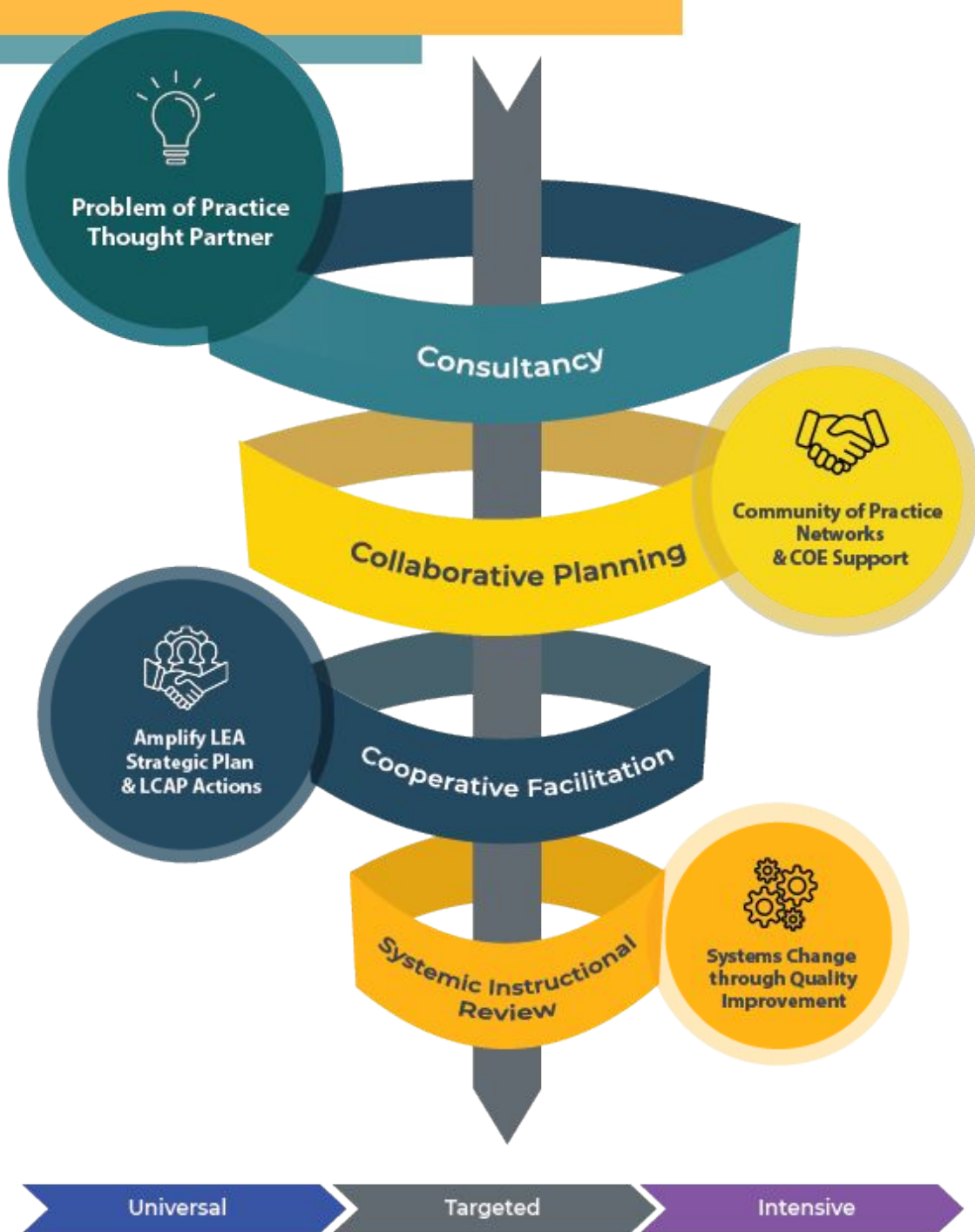
Meet with all LEAs and co-create consultation plan with agreed upon roles, responsibilities, and commitments.

Convening of  
Partners

## Consultation Plan Monitoring

Partner implementation of consultation plan with progress updates

Progress Updates



# Spectrum of Direct Technical Assistance (Targeted Support)

# On The Horizon

- Continue the work
  - as individuals
  - as a team
  - as an agency
- LEA Transition Guidelines
- Supporting LEAs as new school year begins



Thank You!  
Questions/Comments