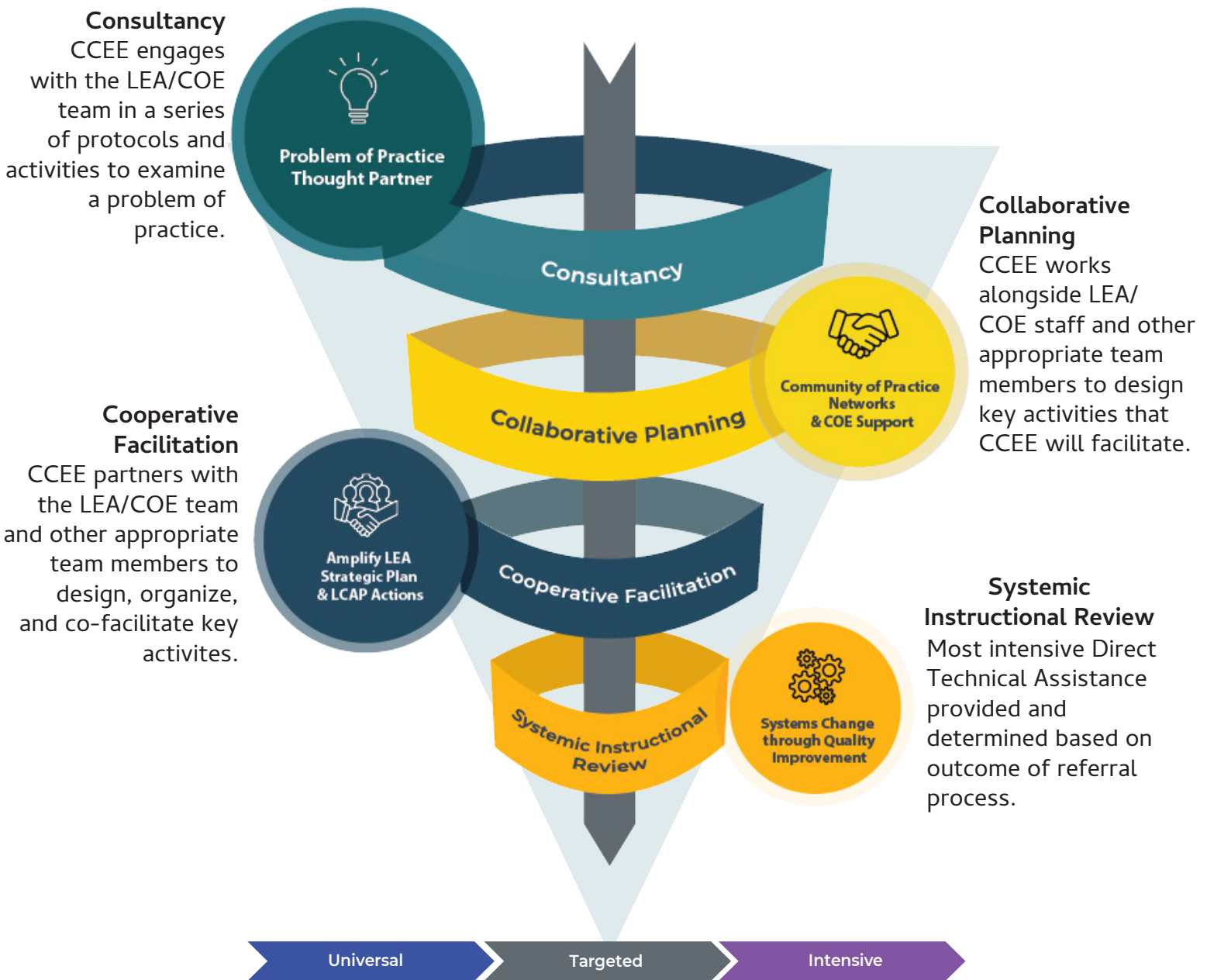


Direct Technical Assistance

As part of the California Statewide System of Support (which provides Universal, Targeted, and Intensive support) the California Collaborative for Educational Excellence (CCEE) provides varying levels of targeted support through CCEE's Direct Technical Assistance (DTA) which includes: Consultancy, Collaborative Planning, Cooperative Facilitation, and the Systemic Instructional Review. CCEE can act as a thought partner through a consultancy or provide more support through cooperative facilitation where CCEE, COE, and the LEA work collaboratively to leverage existing strategic plans and LCAP goals with quality improvement tools through cycles of continuous improvement.



Email: DirectTechnicalAssistance@ccee-ca.org
<http://ccee-ca.org/direct-technical-assistance>

DTA Pathways

*Accessing DTA through the
California Statewide System of Support*

Local Educational Agencies can access CCEE Direct Technical Assistance through the following pathways (Education Codes):



California Statewide System of Support, Education Code 52072(a): If a school district with three or more pupil groups, or all their pupil groups if less than three, in three out of four consecutive school years, meets the criteria established pursuant to subdivision (g) of Section 52064.5, the CCEE shall determine, in consultation with the school district and any provider of technical assistance pursuant to Section 52071, if assistance from the CCEE is necessary. When making this determination, primary consideration shall be given to the needs of the pupils in the school district.



COE/GEO Lead Request or Referral, Education Code 52074(g)(1)(A): The LEA consults and works with their COE and GEO Lead to determine if the advice and assistance of the CCEE is necessary.



Referral Received: Emergency State Loan, Education Code 52074(g)(2)(A): A Local Educational Agency (LEA) can automatically be referred to the CCEE for Direct Technical Assistance if the LEA is receiving an emergency apportionment (state loan) because it is fiscally insolvent.



State Superintendent of Public Instruction (SPI), Education Code 52074(g)(1)(B): The Superintendent determines the advice and assistance of the CCEE is necessary to support an LEA.



Email: DirectTechnicalAssistance@ccee-ca.org
<http://ccee-ca.org/direct-technical-assistance>

ccee
California Collaborative
for Educational Excellence