

The Power of Data Partnerships: District data sharing through the Local Assessment Project



John Massie
Program Manager



Krystal Ramirez
Data Analyst

April 9, 2024

Welcome



Ingrid Roberson

Assistant Director,
CCEE

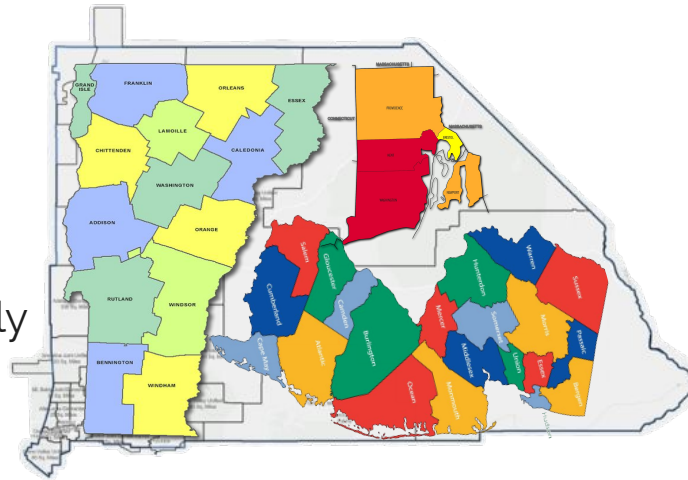
- Recording & slides will be posted on [CCEE's website](#)
- Slides will be linked in the chat
- **Questions/Comments:** Please use the Q&A or chat features

San Bernardino County Superintendent of Schools

Transforming lives through education

Who we are:

- 20,105 Sq. Miles
- 33 Districts
- ≈ 400,000 Students
- 71% Socioeconomically Disadvantaged
- 3 member Data Team



What we do:

- Data and Assessment Support for COE and Districts
- [Open Data Portal](#)
- [Cradle to Career](#)

Imagine if...

- ➔ There was a place you could get up-to-date data about student reading and math performance throughout the school year, for all grade levels.
- ➔ There was a dashboard or report where you could compare your district to the county as a whole, a specific region, or other districts.
- ➔ There was roadmap to your local assessment system where you could find the reports you need.
- ➔ Data became information, that led to action, that improved teaching and learning.
- ➔ You had access to this dashboard . How would *you* use it?-Share in the chat

The Purpose of this Data Dashboard



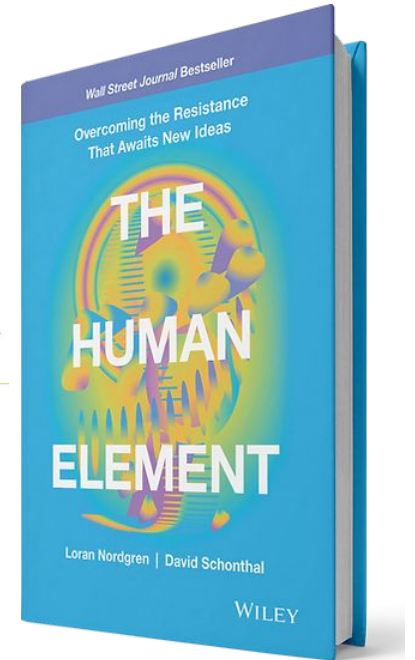
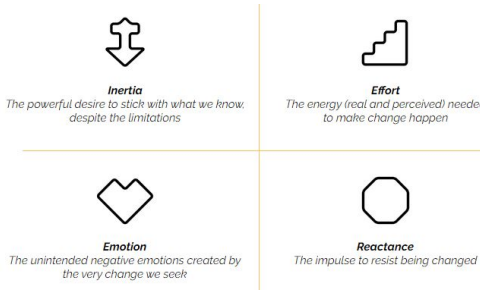
Determining the Need

- Our districts shared they struggle with the collection, visualization, analysis, and sharing of their student outcome data
- The role of local assessments can be limited by factors like; vendor reports, year over year data, and comparability
- Limiting the scope of this project to reading and math
- The lack of a portal to access data securely

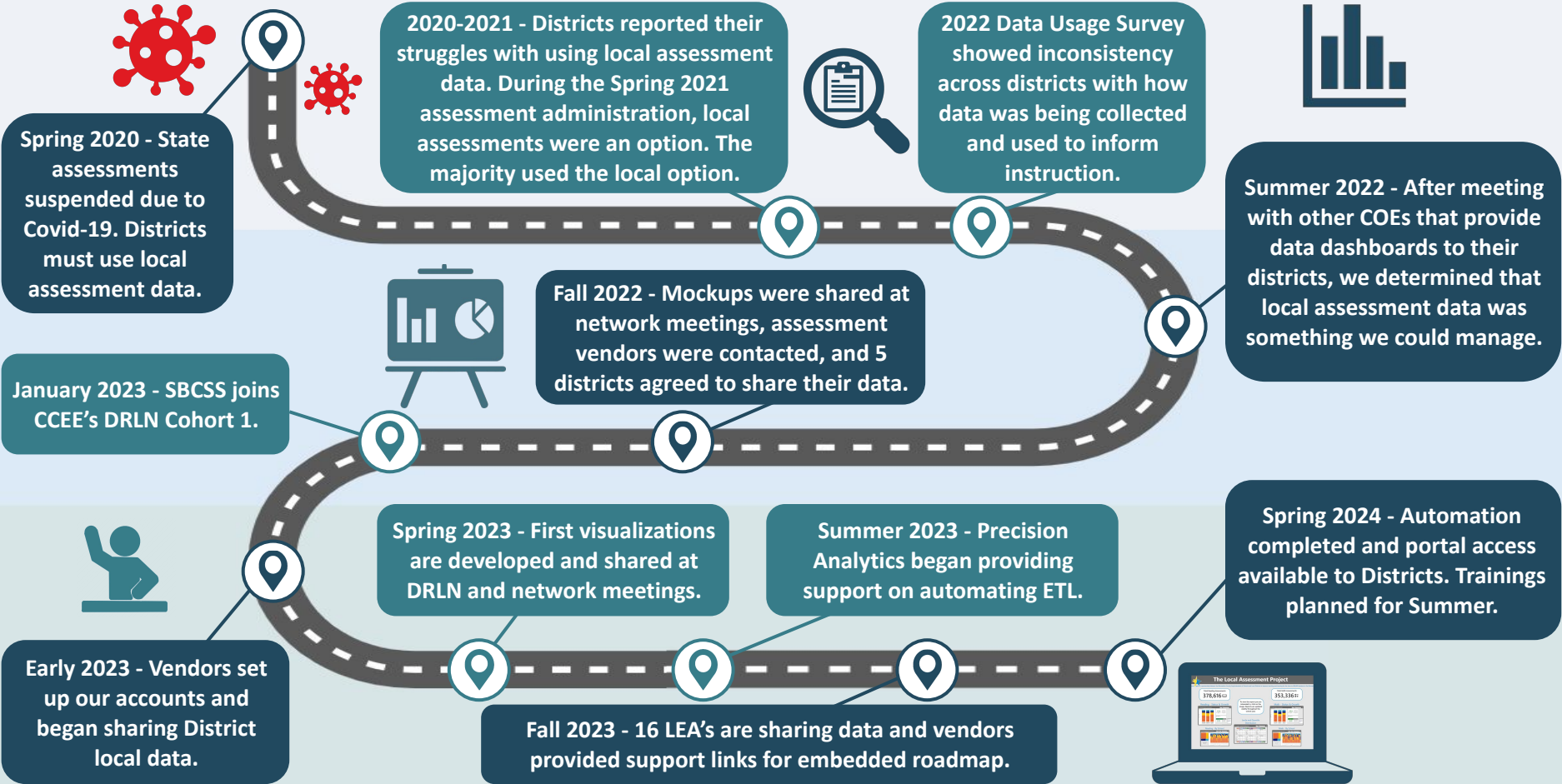


Guiding Principles

- All too often, “fuel” is added to ideas or innovations
- By reducing “friction” between users and their data, it becomes more actionable
- Less is more
- Build a Roadmap
- Fill a void in the data
- Get the right data, in the right hands, at the right time



The Local Assessment Project Journey





The Local Assessment Project

The Local Assessment Project is a partnership between San Bernardino County Superintendent of Schools and Local Districts to improve teaching and learning for the close to 400,000 students in San Bernardino County.

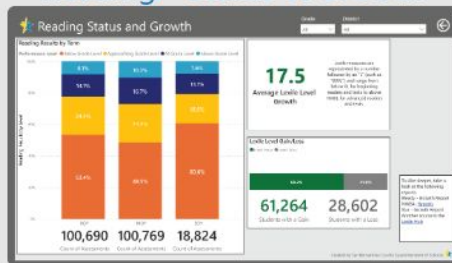
Total Reading Assessments

378,616 

Total Math Assessments

353,336 

Reading - Status & Growth

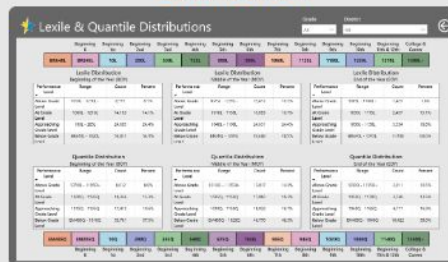


To view the report you are interested in, click on the image. Reports are updated weekly throughout the school year.

Math - Status & Growth



Lexile and Quantile Distribution



Reading - By School



Math - By School



The Roadblocks and Detours

Technical



Files



Team Expertise



Secure Portal

User Experience



Implementing Feedback

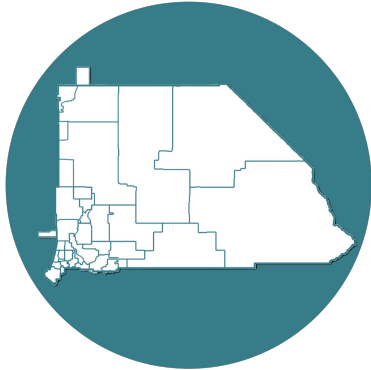


Tracking Usage



Training

The Road Ahead



Change instructional practices to improve student outcomes

Thank You

Contact

John Massie

Program Manager, Assessment, Data Analytics,
Research & Evaluation

john.massie@sbcss.net

Krystal Ramirez

Data Collection Analyst

krystal.ramirez@sbcss.net

Next Steps

Interested in connecting further? Join us for the **Special Interest Group (SIG) Session** by providing your contact information in the feedback survey!

Feedback Survey: bit.ly/3J3zzoX

Why did you choose those colors?

- Color Selection
- Not Dashboard
- Not CAASPP
- Accessibility
- No "RED"

ELA

Percent of students within each achievement level

