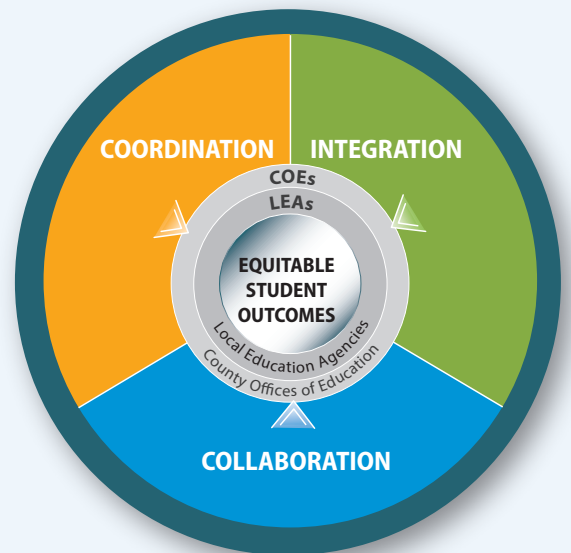
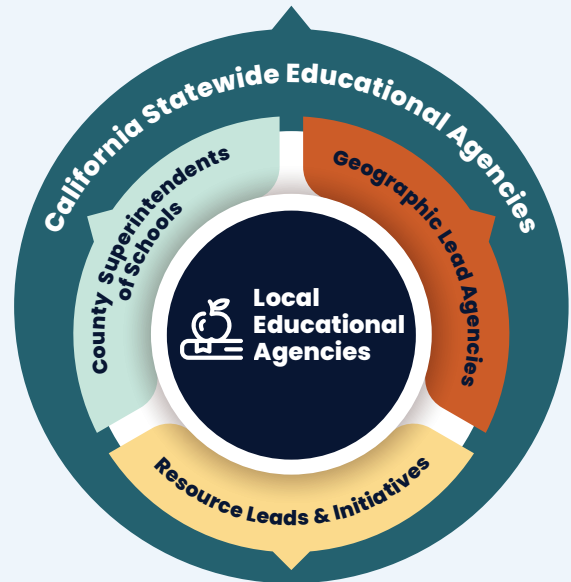


The California Statewide System of Support

Welcome to the California Statewide System of Support, a vital component of the state's public school accountability system.

This comprehensive system leverages coordination, collaboration, and integration with various educational entities, including County Offices of Education (COEs), Local Educational Agencies (LEAs), and charter schools. The ultimate goal of the Statewide System of Support is to provide coordinated, needs-based, and differentiated resources and supports to LEAs that lead to improved services for all students evidenced by the closing of opportunity gaps and improved student outcomes.

Lead Agencies, often situated within designated county offices, provide expertise, programs, and resources, to empower local educators to leverage the wide variety of resources and supports at the universal, targeted, and intensive levels, to help meet the needs of their individual LEAs.



RTI International is the external evaluator of the Statewide System of Support (SSOS). In this brief we draw on data from surveys and interviews administered in 2024 to highlight the impact of the SSOS.

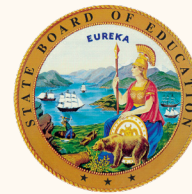
COORDINATION

Coordination consists of agencies *sharing information and providing mutual support and learning*.

- **63%** of Lead and Statewide agency staff believe that the Statewide Agencies are providing useful support to Lead Agencies in **clarifying roles and responsibilities** compared to just 29% in 2020.
- **80%** of Lead and Statewide agency staff believe that the Statewide Agencies are providing useful support to Lead Agencies in **developing positive relationships** which is similar to the 77% who reported so in 2020.
- **61%** of Lead and Statewide agency staff believe that the State Agencies and Lead Agencies that I work with in the Statewide System of Support have a **clear sense of their roles and responsibilities** compared to just 27% in 2020.

"I appreciate the opportunity to meet on a quarterly basis with other system leads, allowing us time to develop a cohesive working relationship, which created avenues for collaboration between the meetings hosted by CCEE/CDE."

"I really appreciated the support from CDE, CCEE, and SBE in co-creating the first year of our grant work. We were asked to collect baseline data from the COE run programs for students with extensive support needs. Throughout the first few months of the grant work, we felt incredibly supported by all entities and are very proud of the work we are doing."



COLLABORATION

Collaboration occurs when lead agencies identify *common tasks and move towards compatible goals*.

- **57%** of Lead and Statewide agency staff believe that the State Agencies and Lead Agencies in the Statewide System of Support **invest the right amount of time in collaborative efforts** compared to just 38% in 2020.
- **71%** of Lead and Statewide agency staff believe that the Statewide Agencies are providing useful support to Lead Agencies in **building collaborative opportunities** with other Lead Agencies.

"The efforts that have been made this year to incorporate the monthly huddles has been very beneficial as I am able to learn about innovations and initiatives from across the state and bring those back to the Geo Leads and share within our region for greater collaboration and access to opportunities."

INTEGRATION

Integration is reached when agencies show integrated strategies and collective purpose.

- **73%** of Lead and Statewide agency staff feel that **my organizational activities are aligned with those of my fellow lead agencies/statewide partners** compared to 54% in 2020.
- **79%** of Lead and Statewide agency staff feel that **my agency is integrated into the Statewide System of Support** similar to 81% in 2021.
- **56%** of Lead and Statewide agency staff believe statewide partners (CCEE, CDE, SBE) and lead agencies have a **shared understanding of what success looks like** compared to just 32% in 2020.

"The intentional nature of being a true system of support and not silos. we are actively working across the SOS with other projects on SHARED goals and shared work."

"The Statewide System of Support is doing this to support our work. We have a few teams working in the area of inclusion and the monthly huddles are a valuable resource for us to orient each other to our work and support gaps, and problem solve."