

Power Up Your CA MTSS

UNLOCK

Statewide System of Support Resource Hub for Instant Impact!

Unite Empower Impact



Mix and Mingle!



What is top of mind for you right now when you think about MTSS?



What are two topics you are most interested in learning about today to support your MTSS journey?



Unite Empower Impact



Objectives

- Master the Statewide System of Support Resource Hub to accelerate your CA MTSS implementation
- Harness AI-powered collaboration to spark fresh ideas and solutions
- Leave with ready-to-use tools that will make an impact tomorrow

Unite Empower Impact



The Statewide System of Support (SSOS) - A Multi-tiered System of Support (MTSS)

Created using the MTSS Framework

MTSS takes a whole child approach to address the needs of all students from a schoolwide and classroom approach with *Universal*, *Targeted* and *Intensive* supports to meet students where they are -- *What does each and every child need?*

The SSOS uses this framework, but at the local educational agencies (LEA), regional and/or statewide level -- *What does each and every LEA need?*



Unite Empower Impact



([Access the CA MTSS Framework HERE](#))

California MTSS FRAMEWORK

The California MTSS Framework includes 5 Domains and 11 Features. The needs of the Whole Child are successfully met when ALL Domains and Features are effectively implemented with fidelity.



Whole Child Domain

**Inclusive Academic Instruction
Features**

**Inclusive Behavior Instruction
Features**

**Inclusive Transformative
Social-Emotional Instruction and
Mental Health Support Features**

Essential Domains and Features to Support the Whole Child

**Administrative
Leadership Domain**

Strong & Engaged Site
Leadership Features

Strong Educator Support
System Features

**Integrated Supports
Domain**

Organizational Structure
Features

Strong & Positive School
Culture Features

**Family and Community
Engagement Domain**

Trusting Family Partnerships
Features

Trusting Community
Partnerships Features

**Inclusive Policy Structure
and Practice Domain**

Strong LEA / School
Relationship Features

LEA Policy Framework
Features

Adapted with permission from: SWIFT Education Center. (2016).
Domains and Features Placemat. Lawrence, KS. swiftschools.org



The purpose of California's System of Support ***(CA Education Code 52059.5) (1 of 2)***

Created in part with the Local Control Funding Formula (LCFF) legislation to:

1. Support the continuous improvement of student performance in each of the eight state priorities areas.
2. Address the gaps in achievement between student groups identified.



Unite Empower Impact



The purpose of California's System of Support (CA Education Code 52059.5) (2 of 2)

Created in part with the LCFF legislation to:

3. Improve outreach and collaboration with stakeholders to ensure that goals, actions, and services described in school district and county office of education (COE) Local Control and Accountability Plan (LCAPs) reflect the needs of students and the community, especially for historically underrepresented or low-achieving groups.



Unite Empower Impact



Who is the System of Support

- Three State agency partners: CDE, CCEE, and the State Board of Education (SBE)
- Various Resource and Initiative Leads
- State Programs and Federal Title Programs
- Geographic Lead Agencies (to provide regional support)
- 58 COEs
- Districts, schools, teachers, students--everyone!



CDE System of Support Website:

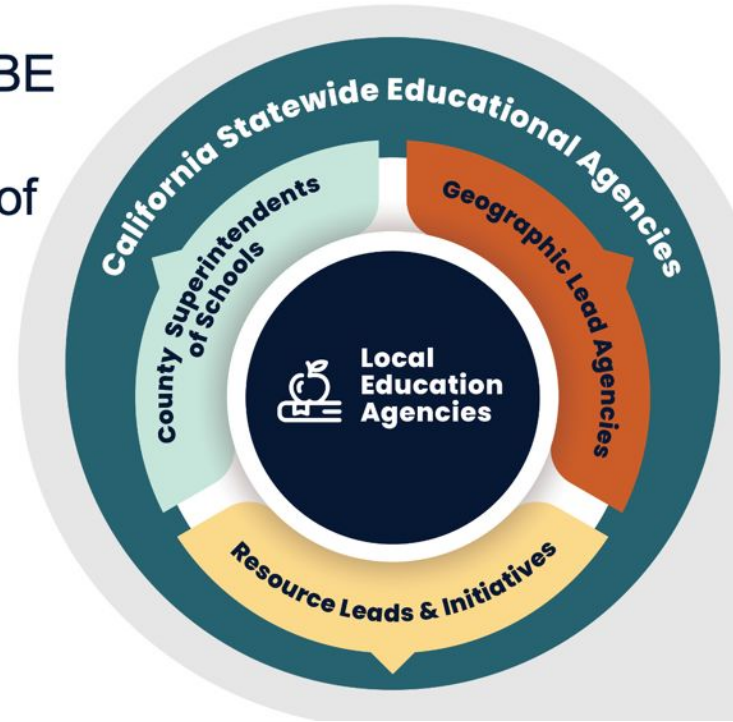
<https://www.cde.ca.gov/sp/sw/t1/csss.asp>



Unite Empower Impact



-  CA Statewide Educational Agencies: CDE, CCEE & SBE
-  58 County Superintendents of Schools
-  7 Geographic Lead Agencies
-  Resource Leads & Initiatives



Your State Agencies' Roles & Responsibilities



SBE provides strategic guidance and direction and gives approval of the selection and continuation of Lead Initiatives.



CDE administers most of the expert lead agency funding, supports and coordinates the SSOS work with LEAs, COEs, and educational partners.



CCEE works to coordinate and collaborate with lead agencies and initiatives within the SSOS. CCEE also provides and coordinates the work related to Direct Technical Assistance (DTA).

California MTSS Continuum of Support

Universal Design for Learning and differentiated instruction are integrated and implemented at all levels of the continuum of support to ensure the academic, behavior, social-emotional, and mental health development of ALL students in the most inclusive and equitable learning environment.



ALL STUDENTS

UNIVERSAL SUPPORT

Evidence-based practices are accessible by ALL students where the integration and implementation of Universal Design for Learning and differentiated instruction support academic, behavior, social-emotional, AND mental health development.



SOME STUDENTS

SUPPLEMENTAL SUPPORT

Additional services are provided to some students to support academic, behavior, social-emotional, and/or mental health through the integration and implementation of Universal Design for Learning and differentiated instruction. Supplemental supports are provided in addition to, not in place of universal supports, and available to all students regardless of identification for specialized services based on need through the use of diagnostic and progress monitoring assessments.



FEW STUDENTS

INTENSIFIED SUPPORT

Targeted supports are provided to students with greater needs to support academic, behavior, social-emotional, and/or mental health through the integration and implementation of Universal Design for Learning and differentiated instruction. Intensified supports are provided in addition to, not in place of universal supports, via specialized service providers, and available to all students regardless of identification for specialized services based on need through the use of diagnostic and progress monitoring assessments.



WELCOME TO THE STATEWIDE SYSTEM OF SUPPORT

About the System

▶ [The "What"](#)

▶ [The "How" & Th...](#)

 **CALIFORNIA STATEWIDE
SYSTEM OF SUPPORT**

The ultimate goal of the Statewide System of Support (SSOS) is to provide coordinated, needs-based, and differentiated resources and support to LEAs that lead to improved services for all students evidenced by the closing of opportunity gaps and increased achievement.

<https://systemofsupport.org/>

Statewide System of Support Resource Hub & Directory

Welcome to the CCEE Statewide System of Support Resource Hub and Directory! With this tool, County Offices of Education, districts, charter schools, Special Education Local Plan Areas, and other educational partners in California, can find information about state-funded initiatives, resources, and contact information for System of Support partners, to employ best practices, facilitate improvement plans, and improve student outcomes.

Learn More

Resources

Initiatives

Directory

Initiative ▾

Student Groups ▾

Search by keyword or name...



Sort by ▾

223 Resources Found



<https://systemofsupport.org/resource-hub>

Use the SSOS to find 2-3 MTSS Resources



What is top of mind for you right now when you think about MTSS?



What are two topics you are most interested in learning about today to support your MTSS journey?

Unite Empower Impact





Unite Empower Impact





GIVE ONE
— *get one* —

Unite Empower Impact

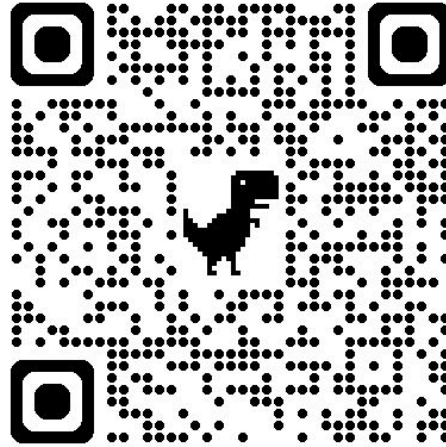




A VIRTUAL EXHIBITION PRESENTED BY 
THE CALIFORNIA STATEWIDE SYSTEM OF SUPPORT 

GET CONNECTED NOVEMBER 12, 2025
PRESENTED ONLINE

VISIT WWW.SYSTEMOFSUPPORT.ORG/CONFERENCE FOR MORE INFORMATION



Unite Empower Impact



Thank you

Unite Empower Impact

